

Case Study 3: Curtain Wall Installation

The Cosmopolitan Resort Casino - Las Vegas, NV

Contractor: Far East Aluminum

Project Scope:

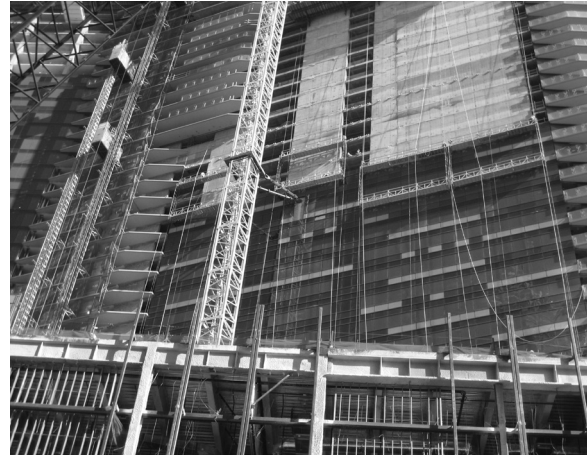
Installation of curtain wall and glass on sheer walls

Challenges:

- The type of curtain wall being installed required attachment at both the uppermost and lowermost locations on the panel.
- Initiating curtain wall installation before completion of the roof required upper floor rigging positions.
- Frequent moves of the rigging position and tight project timelines required a fast rigging method for sheer walls.

Solution:

5 double-deck platforms, varying from 25 ft (7.6 m) to 30 ft (9.1 m) long, powered by SC1500 and SC40 traction hoists; sheer wall brackets with double eyes; 16 ft (4.9 m) beam sets rigged with post shores to eliminate counterweights.



3 double-tier platforms installing curtain wall system

Check out the products featured in this case study:

- Modular Platforms - pages 70-71
- SC1500 Hoist - pages 26-32
- SC40 Hoist - page 33
- Post Shore System - page 107