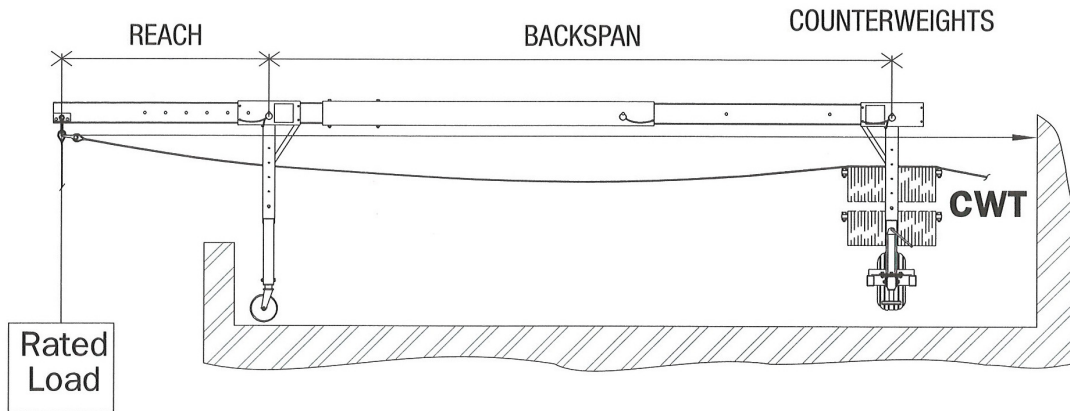


Counterweight Formula



Note: All rigging devices must be securely tied back.

$$\text{Counterweights} = \frac{(4) \times (\text{Rated hoist capacity}) \times (\text{Reach})}{(\text{Back span})}$$

Labels on all Spider devices requiring counterweights provide actual number of 50 lb. (22.7 kg) weights needed or total counterweight required for each reach. **No guesses. No math!**

For more information, call: 1-877-774-3370

Calls are routed to the nearest Spider Operation Center.

Spider®
365 Upland Drive
Seattle, WA 98188 USA

Phone: 1-877-774-3370
E-mail: spider@safeworks.com
Internet: www.spiderstaging.com

SafeWorks®, LLC
© 2010

THIS DATA SHEET AND ALL REPRODUCTIONS ARE THE PROPERTY OF SPIDER®. ALL DIMENSIONS AND FIGURES ARE SHOWN FOR GENERAL INFORMATION ONLY AND SHOULD BE CONFIRMED BY SPIDER® BEFORE BEING USED FOR DESIGN OR CONSTRUCTION PURPOSES. ALL INFORMATION IS SUBJECT TO CHANGE WITHOUT NOTICE. SPIDER® IS A DIVISION OF SAFEWORKS, © LLC.