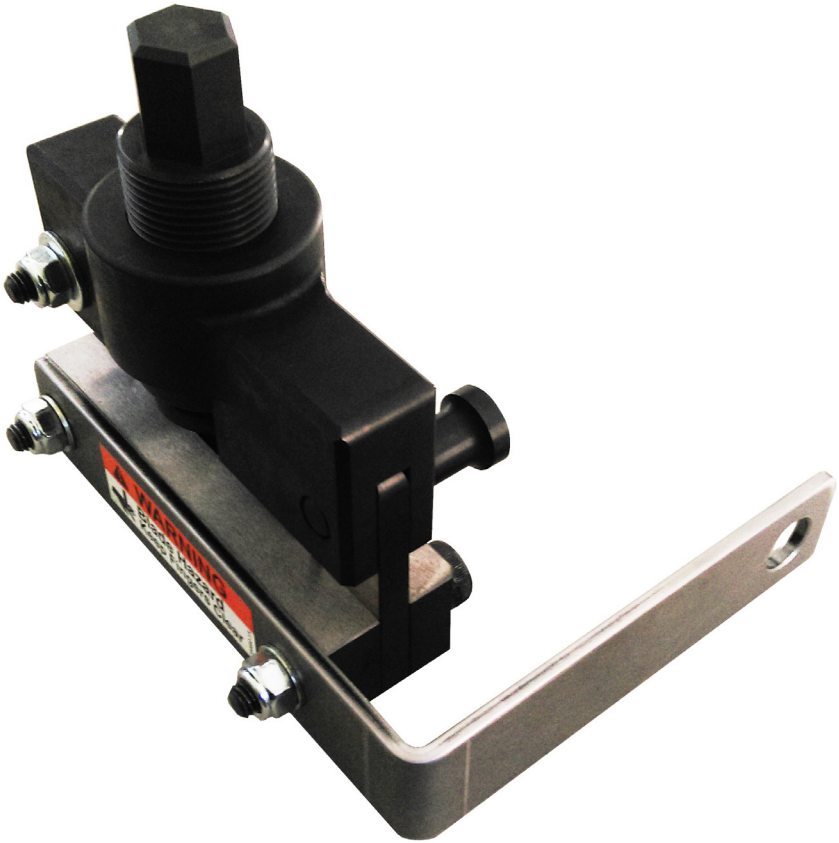




BY BRAND SAFWAY

# Operator's Manual for ProCut Belt Cutter (720905-1)



Manufactured by: Safeworks | 365 Upland Drive, Seattle, WA 98188  
Phone: (855) 457-8513 | Fax: (206) 575-6240

Email: [ProductSupport@SpiderStaging.com](mailto:ProductSupport@SpiderStaging.com) | Website: [SpiderStaging.com](http://SpiderStaging.com)



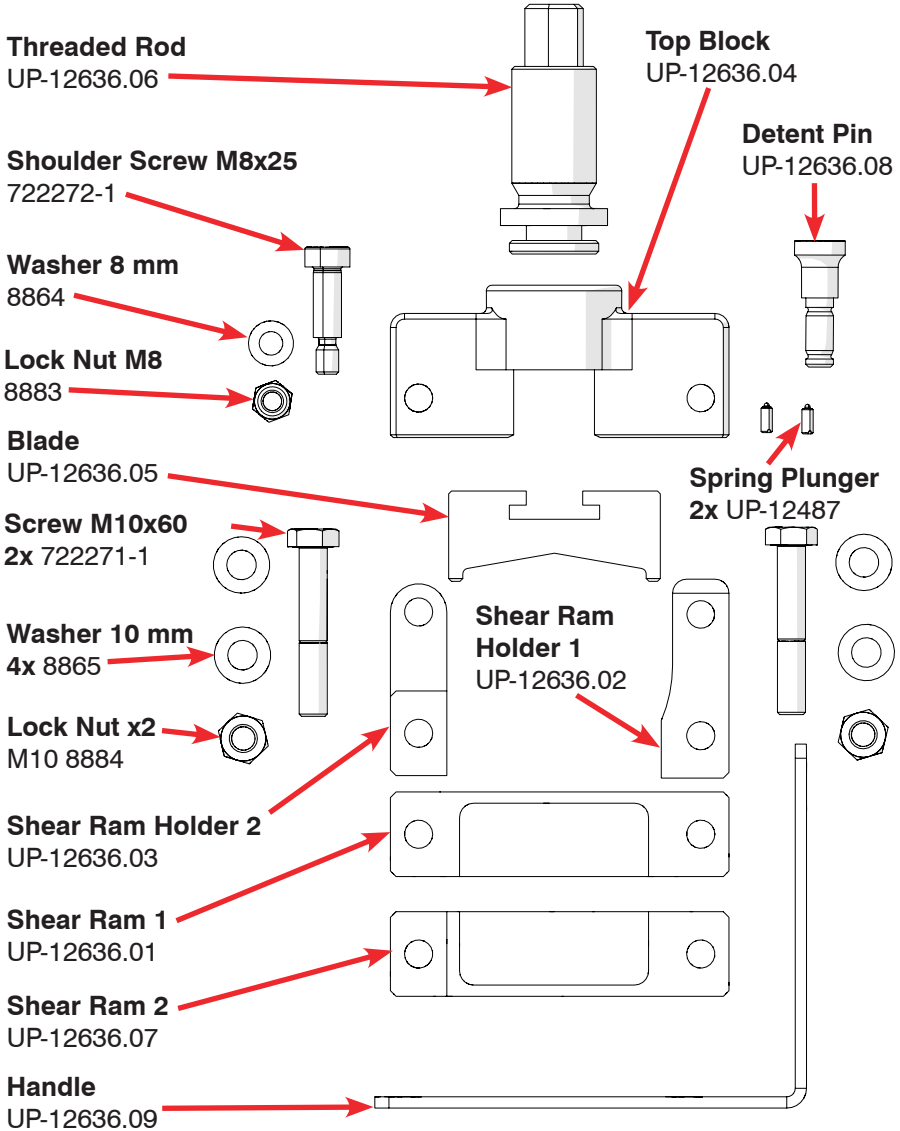
## WARNING

- All persons operating this belt cutter must read and completely understand this manual.
- Only authorized persons shall operate this belt cutter.
- Only use an impact wrench with max. torque of 350 Nm (260 ft lb)
- Any operation in violation of these instructions is at the operator’s own risk and may result in serious injuries.
- Use only spare parts from Spider.
- It is the responsibility of the user to determine that this belt cutter is suitable to be used in conjunction with any other equipment.

# Table of Contents

1. Parts of The ProCut Belt Cutter .....	3
2. How to Use the ProCut Belt Cutter .....	4
3. Servicing the ProCut Belt Cutter .....	7

# 1. PARTS OF THE PROCUT BELT CUTTER



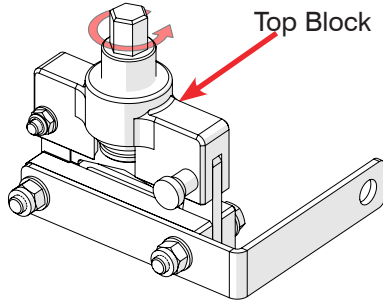


BY BRAND SAFWAY

## 2. HOW TO USE THE PROCUT BELT CUTTER

### Step 1:

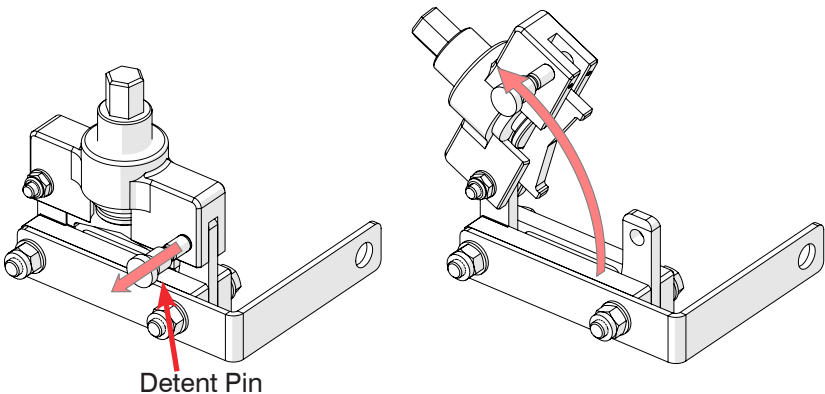
Turn the threaded rod counterclockwise until it is fully seated against the top block.



### Step 2:

Pull out the detent pin and open the belt cutter.

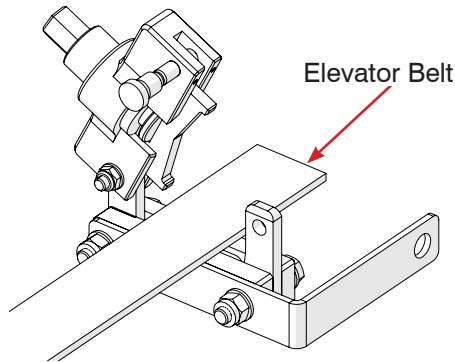
NOTE: The detent pin will stop after the first catch. Do not force the pin further.



### Step 3:

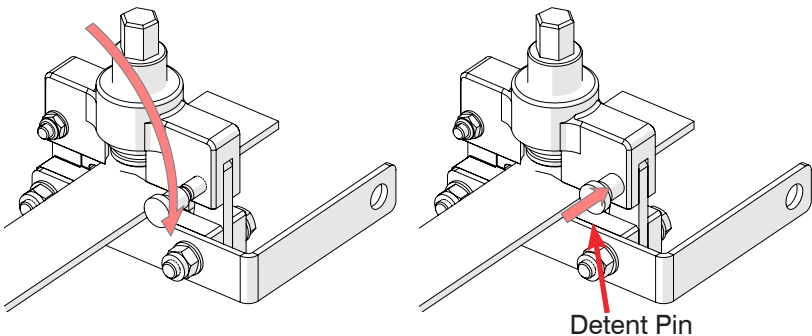
Place belt cutter jaws around elevator belt.

NOTE: Ensure belt lays flat between the between the top block and shear ram holders.



### Step 4:

Close the jaws around the belt and push the detent pin back in as shown below.

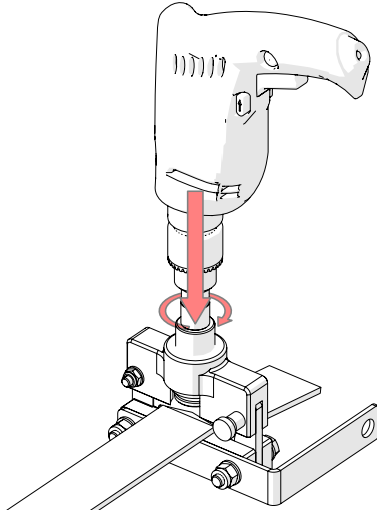




BY BRAND SAFWAY

### Step 5:

Using a 19 mm (or 3/4") socket and impact wrench on the hex end of the threaded rod, drive the belt cutter blade through the elevator belt.



### Step 6:

Remove cut section of belt and reverse the impact wrench to return the blade to the neutral position.

### 3. SERVICING THE PROCUT BELT CUTTER

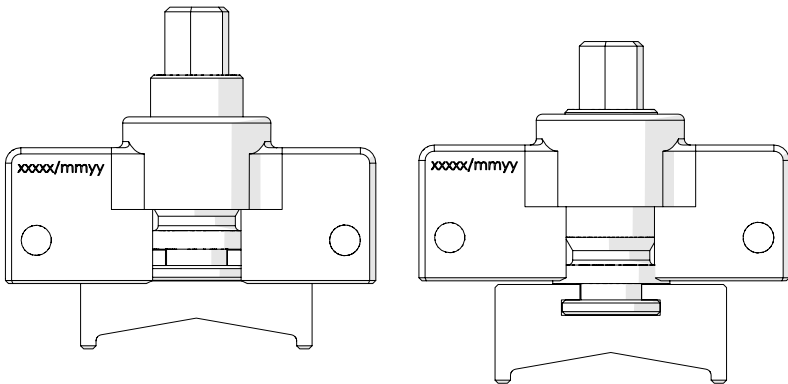
#### Disassembly

##### **Step 1:**

Pull out the detent pin as far as it will go and open the belt cutter.

##### **Step 2:**

Screw threaded rod clockwise to lower the blade. Slide the blade sideways off the round end of the threaded rod.



##### **Step 3:**

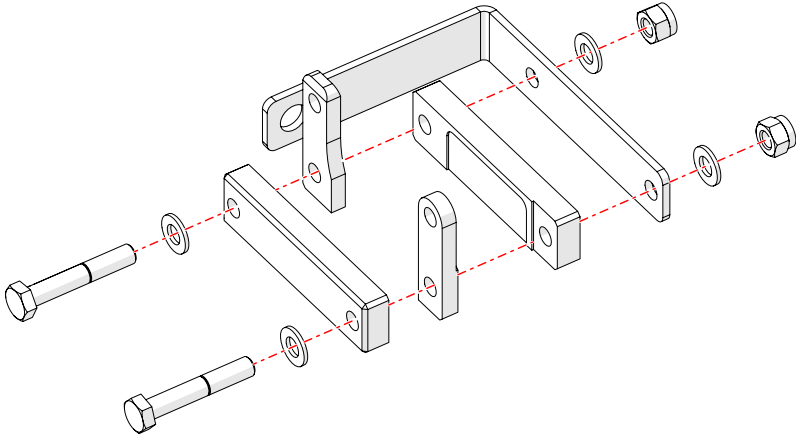
Continue to screw the threaded rod clockwise and fully remove it.



BY BRAND, SAFWAY

## Step 4:

If replacing shear rams, shear ram holders, or handle, remove the two M10x60 bolts using two 16 mm wrenches.



## Servicing

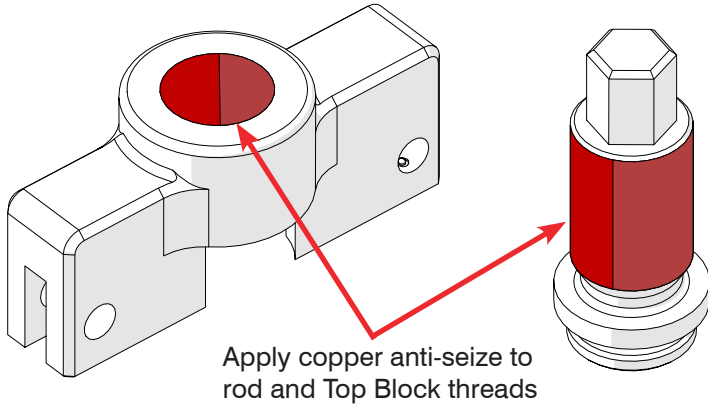
### Step 1:

Every 100 cuts or when all wires are no longer cutting cleanly, inspect the threaded rod and top block for thread damage and replace as necessary. Inspect the blade for worn or chipped edges and replace if necessary. In case of bad cuts, try to retighten the screws.



**Step 2:**

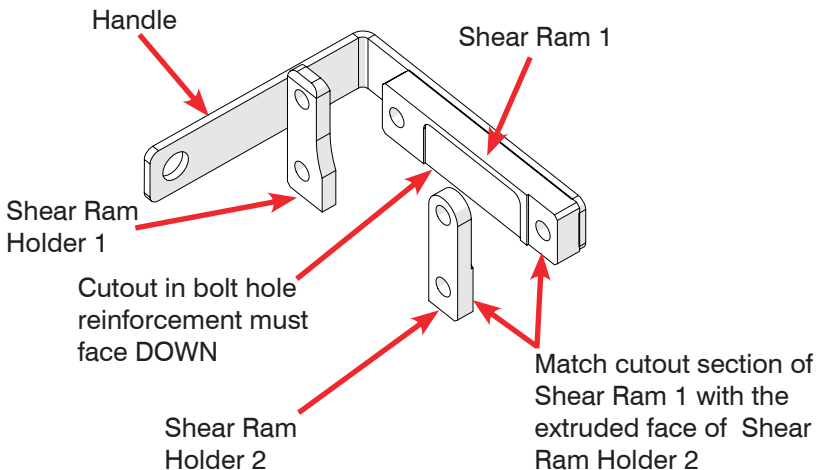
Apply Wurth CU 800 Copper Anti-Seize to the threads of the threaded rod and to the inside of threaded hole in the Top Block.



**Reassembly**

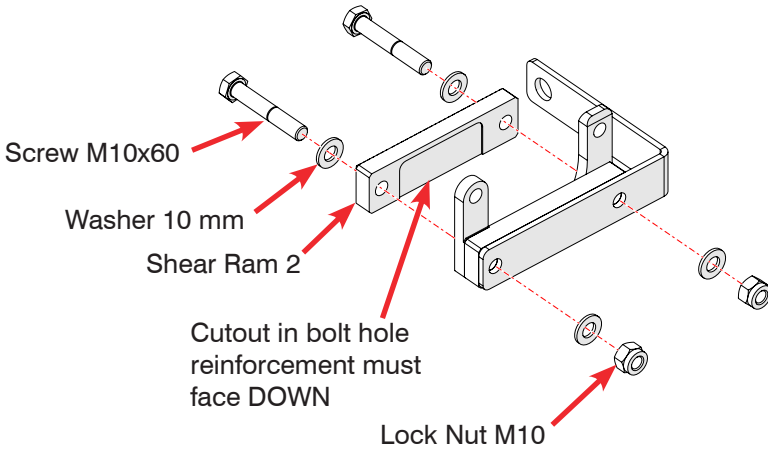
**Step 1:**

Orient Shear Ram 1 so that the cutout in the bolt hole reinforcement faces DOWN. Align the holes of the Shear Ram Holders with the holes on Shear Ram 1 and the Handle as shown below.



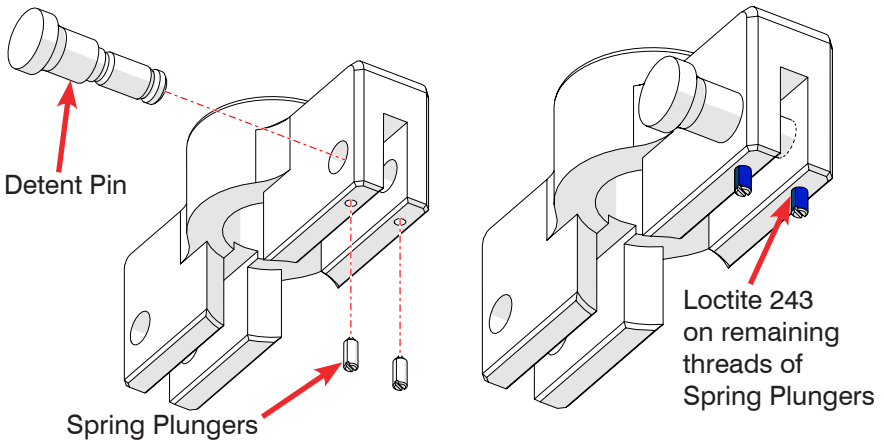
## Step 2:

Orient Shear Ram 2 so that the cutout in the bolt hole reinforcement faces DOWN. Align the holes of Shear Ram 2 with the holes on Shear Ram 1 and the Handle as shown below. Insert the two long bolts with a washer through Shear Ram 2, each Shear Ram Holder, Shear Ram 1, and the Handle. Secure with a washer and locknut using two 16 mm wrenches.



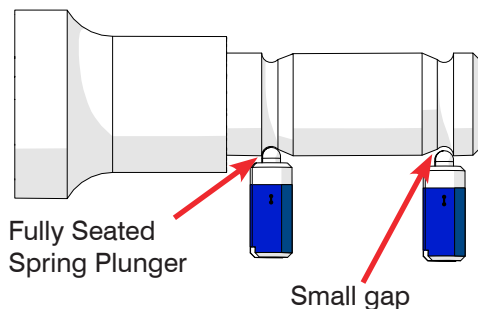
### Step 3:

Insert the Detent Pin into the Top Block as shown below. Screw the first two threads of the two Spring Plungers into the bottom of the Top lock using small flathead screwdriver. Apply Loctite 243 to the remaining threads of the spring plungers and continue to screw them in.



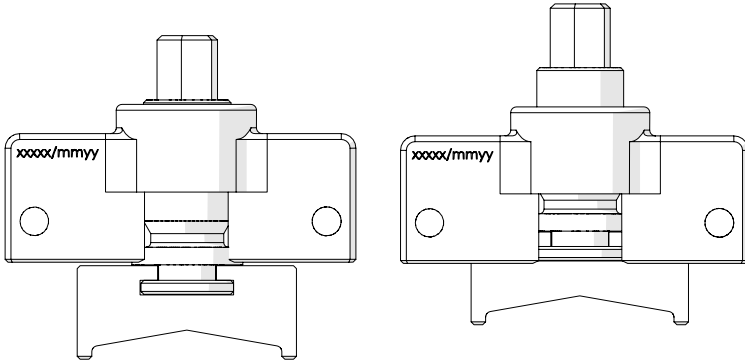
### Step 4:

Tighten the spring plunger furthest from the head of the Detent Pin enough to hold the pin but loose enough to be able to removed with a slight force. Tighten the second plunger enough to allow the Detent Pin to move but not be removed.



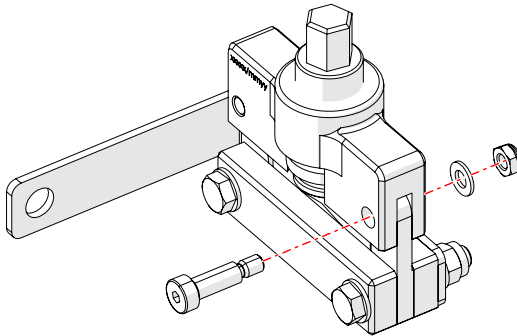
## Step 5:

Screw the Threaded Rod into the Top Block just far enough to slide the blade sideways onto the round end of the threaded rod. Once the blade is in place and aligned with the channel of the Top Block, continue to screw the Threaded Rod to draw the blade up into the top block.



## Step 6:

Insert the Shoulder Bolt M8x25 through the hole in the top block and shear ram holder 2. Secure with a washer and locknut and tighten using 5 mm Allen wrench and 13 mm wrench.



**Step 7:**

Pull out the detent pin and slide the top block onto shear ram holder 1. Align the holes and push in the detent pin.

