

# Bolt Down Pedestal for Mobile Socket

723737

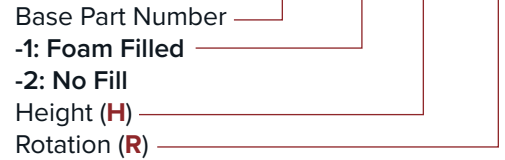
## Description

Mobile pedestals are used in conjunction with mobile sockets to elevate the davit from the base roof equipment. Heights will depend on connection, roof structure, and parapet wall height.

**Bolt Down:** Used in conjunction with embed or thru-bolt plates.

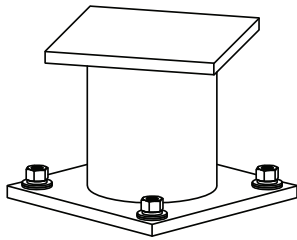
## Part Number Logic

723737 - (X) - (XX) - (XX)



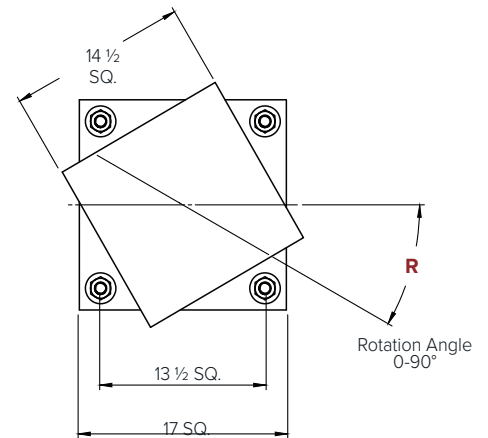
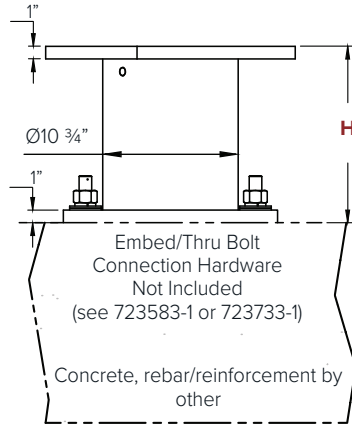
### Part Number Example:

723737-1-12-60: Foam filled, 12" high bolt down pedestal, top plate rotated at 60°



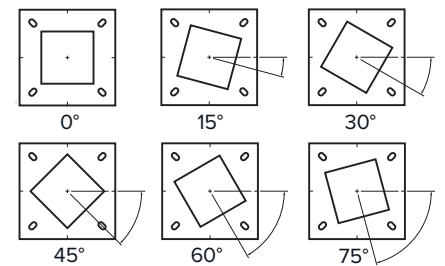
723737-1-12-60 shown above

Torque as required by project specifications.



Part Number	723737
Function	Elevate davit to concrete roof connection via embed or thru-bolt
Moment Rating	127,500 in-lb
Dimensions	Length and Width: 14 1/2" Height (H): 8" - 26" in 1" increments <i>*Contact Spider for non-standard height options</i>
Material	<b>Plates:</b> ASTM A572 Steel GR50 <b>Pipe:</b> ASTM A53 Grade B Hot Dipped Galvanized (ASTM A123) <b>Hardware:</b> Stainless Steel ASTM F594 GR Nuts 1-8 UNC
Compatible with	723642 Mobile Socket 723583-1 Embed Bolt Assembly 723733-1 Thru Bolt Assembly
Compliance	Welding by AWS certified welders to AWS standards. Conforms with OSHA 1910.66, CAL/OSHA title 8, ASME A120.1-2014. 723737-1-XX-XX Conforms with NYSDOL Advisory Standard 101.

## Top Plate Clockwise Rotations



Spider® is a division of SafeWorks, LLC. This data sheet and all reproductions are the property of SafeWorks, LLC including all information contained herein and any information derived from this data sheet. Users are solely responsible for the safe and proper use of all products or any derivative products. This data sheet is only intended for illustrative purposes and should not be relied upon in place of an operating manual or a competent user trained to properly use the products depicted. All dimensions and figures shown are for general information only and should be confirmed and permission obtained from SafeWorks LLC before being used for design or construction purposes. All information is subject to change without notice. SafeWorks LLC disclaims all liability from any use or misuse of the information contained herein.