

# Weld Down Socket-Pedestal

723668

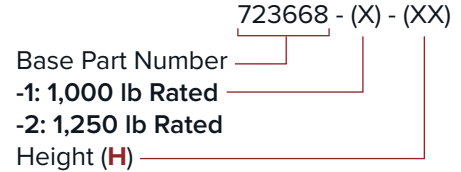


## Description

Pedestals are used to elevate the davit from the base roof equipment. Heights will depend on connection, roof structure, and parapet wall height. This configuration includes a socket.

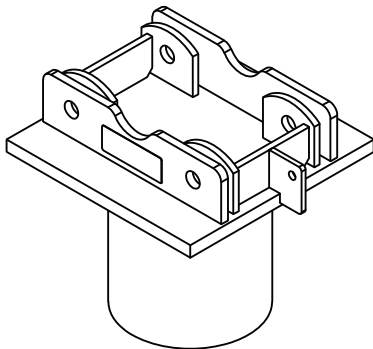
**Weld Down:** Used when welding directly to building structure.

## Part Number Logic

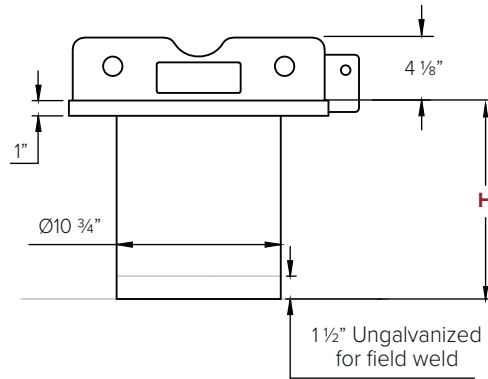


### Part Number Example:

723668-1-12: 1,000 lb rated, 12" high weld down socket-pedestal.

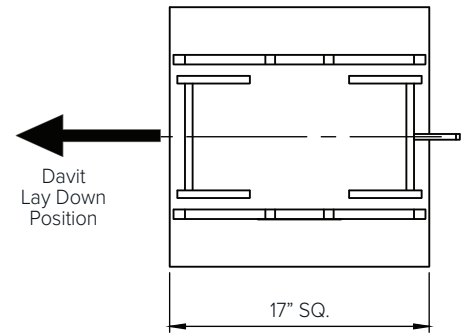


723668-1-12 shown above



Weld size/type and supporting structure as required by project specifications or qualified person.

\*Contact Spider for non-standard height options or slab thickness over 12"



Part Number	723668
Function	Elevate davit to roof connection via welding
Load Rating	(-1) 1,000 lb, (-2) 1,250 lb
Moment Rating	127,500 in-lb
Dimensions	Length and Width: 17" Height (H): 7" - 25" in 1" increments *Contact Spider for non-standard height options
Material	<b>Plates:</b> ASTM A572 Steel GR50, and ASTM A36 Steel, <b>Pipe:</b> ASTM A53 Grade B Hot Dipped Galvanized (ASTM A123)
Compatible with	723642 Mobile Socket
Compliance	Welding by AWS certified welders to AWS standards. Conforms with OSHA 1910.66, CAL/OSHA title 8, ASME A120.1-2014. Conforms with NYSDOL Advisory Standard 101. (with foam fill post field welding)

Spider® is a division of SafeWorks, LLC. This data sheet and all reproductions are the property of SafeWorks, LLC including all information contained herein and any information derived from this data sheet. Users are solely responsible for the safe and proper use of all products or any derivative products. This data sheet is only intended for illustrative purposes and should not be relied upon in place of an operating manual or a competent user trained to properly use the products depicted. All dimensions and figures shown are for general information only and should be confirmed and permission obtained from SafeWorks LLC before being used for design or construction purposes. All information is subject to change without notice. SafeWorks LLC disclaims all liability from any use or misuse of the information contained herein.