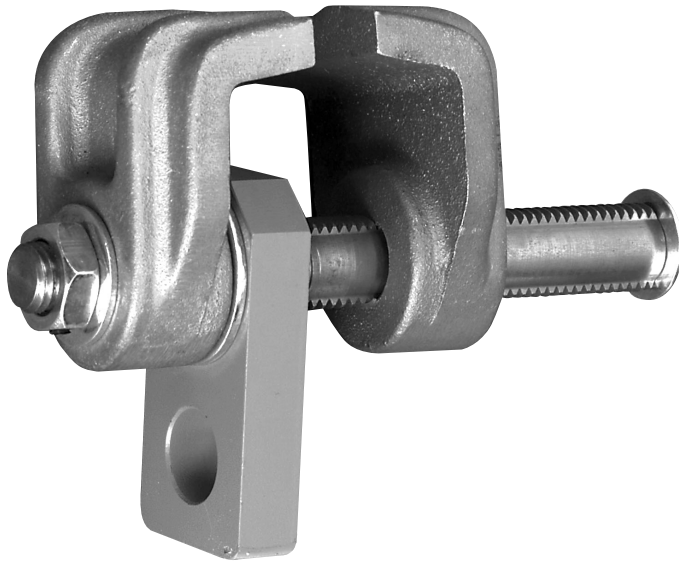


# Adjustable I-Beam Clamp (SA-1039 & SA-1040)



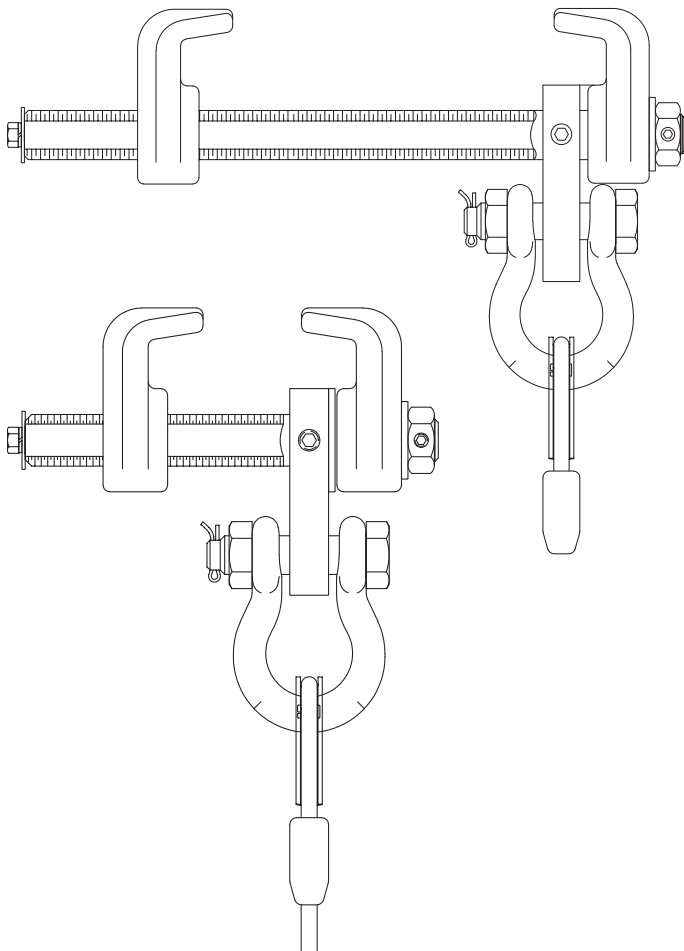
## Self-locking steel clamp fits I-beam flanges:

SA-1039 fits 1 1/2 to 4 in. (38 to 101 mm) wide

SA-1040 fits 1 1/2 to 8 in. (38 to 203 mm) wide

### Key Features:

- Heavy duty steel construction
- Time-tested design
- No tools required for installation
- Built by Spider in the USA



<b>Specifications:</b>	<b>SA-1039 &amp; SA-1040</b>
<b>Capacity:</b>	1,500 lb (680.4 kg)
<b>Weight:</b>	SA-1039: 7 lb (3.2 kg) SA-1040: 8 lb (3.6 kg)

### Notes for use:

- These I-beam clamps are intended to be used on the bottom flange of a horizontal I-beam or structural T.
- The flange should not be narrower than 1 1/2 in. (38 mm) and not wider than 4 in. (102 mm) for the SA-1039, or 8 in. (203 mm) for the SA-1040.
- The beam must be able to sustain the maximum rated working load with a safety factor of 4:1.
- Do not use these devices on a vertical beam or in a way that would place the suspension wire rope parallel to the beam.

**Frequently used accessory:**  
See page 125 for SA-1002 Transfer chain.