

**PURPOSE**

To outline the types of applications/locations, where Spider AC-powered hoists and battery-powered hoists can and cannot be used.

**COMPLIANCE CATEGORY**

- Safety  
Failure to comply with this product update could result in personal injury and/or death. Compliance is mandated within a specific operating time.
- Compliance Required  
Identifies the need for action to correct a condition that, if left uncorrected, may result in reduced equipment reliability or efficiency. Compliance may be required within a specific operating time.
- Optional  
Identifies changes that may be beneficial to some, but not necessarily all. Accomplishment at customers discretion.
- Notification  
Customer communication

**PRIORITY CODE**

- 1  
Prior to unit startup or prior to continued operation (Immediate Action Required)
- 2  
At first opportunity (Prior to Next Scheduled Maintenance Interval)
- 3  
Next Scheduled Maintenance Interval
- 4  
Notification

**PRODUCT MODELS AFFECTED**

All Spider AC-powered hoists and all Spider battery-powered hoists.

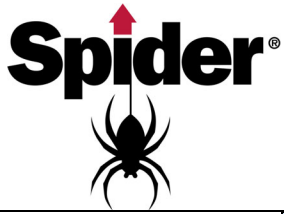
**ACTION REQUIRED**

**ALLOWED APPLICATIONS:**

Both the AC-powered hoist and the battery-powered hoist may be used in an open space application (like the side of a building), or in a confined space application. Defined by OSHA 1910.146(b), a confined space is an area that has limited or a restricted means of entry and exit. Examples of confined spaces include, tanks, vessels, silos, storage bins, hoppers, vaults, and pits. The main determining factor is the absence of dangerous (flammable or combustible) dusts, gases, or vapors.

**PROHIBITED APPLICATIONS:**

Hazardous Classified Locations require the use of systems that are designed to work safely in the environment in which they are operated. Since both the AC-powered hoist and the battery-powered hoist are not intrinsically safe to work in every environment, we must prohibit use in certain environments. In these areas, please use an air-powered hoist whenever a hazardous classified location is specified. The summary table below shows the application, hoist type, and permission.



**Product Update**  
SER 23-005  
**Hoist Application Notification**  
March 3, 2023

Hoist Applications Matrix			
Application	Air-Powered Hoist	AC-Powered	Battery-Powered
Open Space	Yes	Yes	Yes
Confined Space	Yes	Yes	Yes
Hazardous Classified Locations	Yes	No	No
Hazardous Locations and Confined Spaces	Yes	No	No

**FUTURE WORK:**

Requests for usage in special applications will be reviewed upon request on case-by-case basis, however, our position on the approved locations for the AC-powered hoist and the battery-powered hoist will remain the same.