



PURPOSE

There have been reports of some operators not resetting the Overspeed Safety Device after performing the pre use inspections of the hoist, or using the Overspeed Safety Device as a means of additional security while the stage is stationary and not resetting prior to moving the stage upward.

<p>COMPLIANCE CATEGORY</p> <p><input type="checkbox"/> Safety Failure to comply with this product update could result in personal injury. Compliance is mandated within a specific operating time.</p> <p><input checked="" type="checkbox"/> Compliance Required Identifies the need for action to correct a condition that, if left uncorrected, may result in reduced equipment reliability or efficiency. Compliance may be required within a specific operating time.</p> <p><input type="checkbox"/> Optional Identifies changes that may be beneficial to some, but not necessarily all. Accomplishment at customers' discretion.</p> <p><input type="checkbox"/> Notification Customer communication, no action required.</p>	<p>PRIORITY CODE</p> <p><input checked="" type="checkbox"/> 1 Prior to unit startup or prior to continued operation (Immediate Action Required)</p> <p><input type="checkbox"/> 2 At first opportunity (Prior to Next Scheduled Maintenance Interval)</p> <p><input type="checkbox"/> 3 Next Scheduled Maintenance Interval</p> <p><input type="checkbox"/> 4 Optional / Notification</p>
--	--

PRODUCT MODELS AFFECTED

<input checked="" type="checkbox"/> SC1000/1500	<input type="checkbox"/> SC30	<input type="checkbox"/> SC40	<input type="checkbox"/> Zmac	<input type="checkbox"/> Astro	<input type="checkbox"/> ST-17	<input type="checkbox"/> ST-19
<input type="checkbox"/> ST-26	<input type="checkbox"/> ST-180	<input type="checkbox"/> Platforms	<input type="checkbox"/> BAP	<input type="checkbox"/> TAP	<input type="checkbox"/> Other:	
<input type="checkbox"/> Hoist Accessories		<input type="checkbox"/> Platform Accessories		<input type="checkbox"/> Rigging Accessories		<input type="checkbox"/> Safety Accessories

COMPONENT SYSTEM

<input type="checkbox"/> Electrical	<input type="checkbox"/> Mechanical	<input checked="" type="checkbox"/> Safety	<input type="checkbox"/> Other:
-------------------------------------	-------------------------------------	--	---------------------------------

SUB COMPONENT

Overspeed Safety Device

ACTION REQUIRED

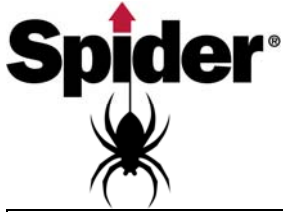
The function of the Overspeed Safety Device is to stop the downward motion of the hoist once engaged. To reset the Overspeed Safety Device it is necessary for the hoist to travel upwards a few inches to release the eccentric cam from the wire rope.

It is required that anytime the hoist is moving that the Overspeed Safety Device be set in its normal operating position. Failure to reset the Overspeed Safety Device can cause accelerated wear and pose a safety risk.

Due to the release of the Noise Reduction upgrade that includes identification electrically that eccentric cam was tripped (red illumination of Down button), a procedure change is required to the daily inspections checks as outlined below.

Testing the Overspeed Safety Device Test Button:

- Push the Up operation button and raise the platform approximately 3 feet (1 meter).
- Disconnect Power from the hoist.
- Lift the Control Descent Lever, as the hoist begins to descend push the Overspeed Test Button.
 - **The hoist MUST stop immediately!**
- Reset Overspeed Safety Device per "Resetting the Overspeed Safety Device" procedure **over →**



Product Update
SER 18-001 Rev B
Overspeed Safety Device
Recommended Operational Procedure
February 21, 2018

Resetting the Overspeed Safety Device:

- Reconnect Power to the hoist.
- Power the hoist up a few inches while at the same time turning the reset knob clockwise until the reset knob engages.

After resetting Overspeed Safety Device verify the hoist moves downward using the controlled descent.

Note: For clarification the Overspeed Safety Device may also be referred to as “Overspeed Brake”.

ACCOMPANYING DOCUMENTS

Refer to the 9961 Operator’s Manual included with the hoist and Daily Inspection Checklist 703210, attached.



SC1000- Hoist Daily Checklist

SC1000

WARNING

BEFORE operating this hoist you must understand and follow the instruction in the 9961 Operator's Manual. All hoists **MUST** have a copy of this manual, if one is not present with this hoist; contact your local Spider Representative. You must be properly trained, in good health, and authorized to operate the hoist. Failure to comply with these instructions could result in serious injury or death.

****If you do not have a copy of the 9961 Operator's Manual for this hoist, please contact your Spider Branch.**

Local Spider Branch: _____

Phone: _____

These instructions are not all inclusive. It is impossible for Spider to know, review, and instruct on every possible way this equipment may be used, and on all possible hazardous situations. Any deviation from the instructions in this operator's manual may jeopardize the safety of yourself and others, and/or result in damage to the equipment.

DAILY TEST REQUIREMENTS

The following tests must be performed at the start of each work shift. If the hoist fails any test, DO NOT use it until it is repaired.

WARNING

Perform all daily tests to ensure correct operation! Do not use the hoists for lifting until you have successfully completed the daily tests.

TESTING THE OVERSPEED BRAKE

While powering the hoist up and down approximately 3 ft, look through the access window. Ensure the fly wheel is turning.

1. De-reeve the wire rope.
2. Reinsert the rope about 12 inches into the hoist.
3. Holding the wire rope firmly, pull it out quickly. If the brake is working correctly it will grab and hold the wire rope in less than 4 inches.
Repeat this test at least 3 times. If the brake does not work correctly, return the hoist to your Spider Branch. **DO NOT USE THE HOIST.**
4. Reset the overspeed brake.

TESTING THE OVERSPEED BRAKE TEST BUTTON

1. Push the UP control button and raise the platform approximately 3 ft.
2. Disconnect Power from the hoist
3. Lift the Control Descent Lever, as the hoist begins to descend push the Overspeed Test Button
4. **The hoist must stop immediately!**
5. Reset Overspeed Safety Device per "Resetting the Overspeed Brake" procedure

RESETTING THE OVERSPEED BRAKE

1. Reconnect Power to the Hoist
2. Power up a few inches, at the same time turn the overspeed brake reset knob clockwise until the reset lever engages. If there is not enough traction to raise the hoist, pull downward on the tail line to increase traction.

After resetting Overspeed Safety Device verify the hoist moves downward using the controlled descent.

Note: For clarification the Overspeed Safety Device may also be referred to as "Overspeed Brake".

Spider® 365 Upland Drive Seattle, WA 98188 USA	Phone: 1-877-774-3370 E-mail: spider@safeworks.com Internet: www.spiderstaging.com	SafeWorks®, LLC © 2018
--	---	---------------------------



SC1000- Hoist Daily Checklist

TESTING THE EMERGENCY STOP BUTTON

While running the hoist in either direction, press the red emergency stop button. The hoist should not run in either direction. To reset, pull the button out.

TESTING THE SECOND WIRE ROPE BRAKE (OPTIONAL ITEM, MAY NOT EXIST ON ALL MODELS)

Lower the platform to ground level. Slacken the main suspension wire rope. Pull on the second wire rope to ensure that grab jaws are locked onto it. Jaws should release when the main suspension wire rope raises the hoist.

TESTING CONTROLLED DESCENT.

1. Raise the hoist approximately 3 ft.
2. Disconnect the power supply. During this test, or when you are actually using the controlled descent, CAREFULLY pull the controlled descent lever, making sure the hoist does not overspeed. The hoist should descend at a slow, controlled speed.

If the hoist travels faster than 35 ft/min, the overspeed brake should engage and stop downward travel, the emergency descent system is not working properly and should not be used.

DAILY INSPECTION

Inspect the wire rope, power supply, rigging, platform, and hoist to make sure they are in proper working order and are not damaged. Bolts, nuts, and clamps must be tight and well secured.

Make sure the stirrup frame is secured with SAE Grade 5 hardware and all nuts and cotter pins are properly installed.

NOTE: When using the hoist in a dirty environment that contains epoxy, paint, cement, sand blast residue, or corrosive material, inspect the secondary overspeed brake several times a day. Protective covers are recommended for use in such environments. Contact your local supplier.

CAUTION

Never attempt any maintenance or repair while the scaffold is suspended in the air.

SAFETY NOTES

DO NOT operate hoist if you hear any unusual noises.

DO NOT operate hoist if adjustments or repairs seem necessary.

DO NOT operate hoist if any warning, operating, or capacity instructions are unclear or damaged. Report any Problems to your supervisor and notify the next operator when changing shifts.

NEVER operate an electric hoist or any electrical equipment in an explosive atmosphere. Explosive atmospheres exist around refineries, chemical plants, grain elevators, coal mines or coal handling equipment. This is not a comprehensive list. Consult an expert (e.g. supervisor, safety director, competent person) if you are in doubt about the safety of your immediate surroundings.

Daily Inspection was done by _____ (Signature)
_____ (Print name)

Date of Inspection _____ Time of Inspection _____

Hoist Serial Number or Unit Number _____

Spider®
365 Upland Drive
Seattle, WA 98188 USA

Phone: 1-877-774-3370
E-mail: spider@safeworks.com
Internet: www.spiderstaging.com

SafeWorks®, LLC
© 2018