



Product Update

SER 16-014

Dogline on Mod
October 18, 2016

PURPOSE

New part numbers have been assigned to 3ft, 5ft and 10ft Dogline Kits and Mod sections equipped with Doglines.

Note: 7ft Mod sections are not acceptable for Dogline use at this time.

COMPLIANCE CATEGORY

Safety

Failure to comply with this product update could result in personal injury. Compliance is mandated within a specific operating time.

Compliance Required

Identifies the need for action to correct a condition that, if left uncorrected, may result in reduced equipment reliability or efficiency. Compliance may be required within a specific operating time.

Optional

Identifies changes that may be beneficial to some, but not necessarily all. Accomplishment at customers discretion.

Notification

Customer communication, no action required.

PRIORITY CODE

1

Prior to unit startup or prior to continued operation (Immediate Action Required)

2

At first opportunity (Prior to Next Scheduled Maintenance Interval)

3

Next Scheduled Maintenance Interval

4

Optional / Notification

PRODUCT MODELS AFFECTED

SC1000/1500

SC30

SC40

Zmac

Astro

ST-17

ST-19

ST-26

ST-180

Platforms

BAP

TAP

Other:

Hoist Accessories

Platform Accessories

Rigging Accessories

Safety Accessories

COMPONENT SYSTEM

Electrical

Mechanical

Safety

Other:

SUB COMPONENT

Dogline

DOGLINE

ACTION REQUIRED

Important: If you have any **7 ft** Dogline Mod, **REMOVE Dogline and Eyes IMMEDIATELY**. Any PI Stage without secondary suspension lines that have Doglines will require Doglines to be removed at next service. Customer will be required to use an independent vertical lifeline per person on stage.

New Part Numbers for Mod sections equipped with Doglines are as follows:

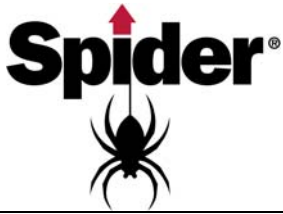
Note: Part Numbers for rental Mod sections will remain unchanged.

MOD PLATFORM SECTION W/DOGLINE:

700755-4 MOD PLAT ASSY;3';DOGLINE;WOOD

700755-5 MOD PLAT ASSY;3';DOGLINE;DIMPLE

700755-6 MOD PLAT ASSY;3';DOGLINE;GRATED



Product Update

SER 16-014

**Dogline on Mod
October 18, 2016**

4968-4	MOD PLAT ASSY;5';DOGLINE;WOOD
4968-5	MOD PLAT ASSY;5';DOGLINE;DIMPLE
4968-6	MOD PLAT ASSY;5';DOGLINE;GRATED
4969-4	MOD PLAT ASSY;10';DOGLINE;WOOD
4969-5	MOD PLAT ASSY;10';DOGLINE;DIMPLE
4969-6	MOD PLAT ASSY;10';DOGLINE;GRATED

New Part Numbers for Dogline Hardware Assemblies are as follows:

700480-2	HARDWARE;DOGLINE;3FT;STD
701142-2	HARDWARE;DOGLINE;5FT;STD
701143-2	HARDWARE;DOGLINE;10FT;STD

Label 720349-1 (included in kits) **must be installed** on eyelets of any Mod Platform section that has Dogline installed; this label calls out the following restrictions:

- Maximum 2 people per platform assembly
- 1 person per Mod section
- Maximum platform assembly length 30 ft
- Use max length 4 ft shock absorbing Y-lanyards (meaning labeled max arresting load 900 lbs)
- Inspect Dogline daily including under deck

Important: Doglines can only be used on 4-line platform setups (2 suspension lines + 2 secondary lines). It is only acceptable to use Dogline Mod as outline above or by specific engineering drawings. If Doglines are damaged, new hardware assembly must be installed per engineering requirement.

ACCOMPANYING DOCUMENTS