



## Product Update

SER 16-007

### Usage of 8-0044 Parapet Clamp & 700558 Cornice Hook as Tie Back & Fall Arrest Anchorage March 15, 2016

#### PURPOSE

1500lbs Parapet Clamp 8-0044 and 1250lbs Cornice Hook 700558 may be used for Tie Backs and Fall Arrest anchorage if no other properly planned anchorage option is available and supporting structure is capable of supporting loads imposed.

#### COMPLIANCE CATEGORY

Safety

Failure to comply with this product update could result in personal injury. Compliance is mandated within a specific operating time.

Compliance Required

Identifies the need for action to correct a condition that, if left uncorrected, may result in reduced equipment reliability or efficiency. Compliance may be required within a specific operating time.

Optional

Identifies changes that may be beneficial to some, but not necessarily all. Accomplishment at customers discretion.

Notification

Customer communication, no action required.

#### PRIORITY CODE

1

Prior to unit startup or prior to continued operation (Immediate Action Required)

2

At first opportunity (Prior to Next Scheduled Maintenance Interval)

3

Next Scheduled Maintenance Interval

4

Optional / Notification

#### PRODUCT MODELS AFFECTED

SC1000/1500

SC30

SC40

Zmac

Astro

ST-17

ST-19

ST-26

ST-180

Platforms

BAP

TAP

Other:

Hoist Accessories

Platform Accessories

Rigging Accessories

Safety Accessories

#### COMPONENT SYSTEM

Electrical

Mechanical

Safety

Other:

#### SUB COMPONENT

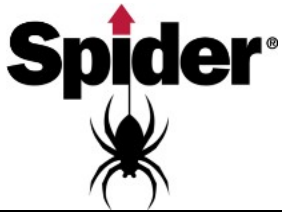
8-0044 Parapet Clamp and 700558 Cornice Hook

#### ACTION REQUIRED

Both the 8-0044 Parapet Clamp and 700558-xx Cornice Hook may be use as rigging tie back or as Fall Arrest anchorage if there are no other suitable anchorage points and deemed to be safe by Competent Person; a Qualified Person must insure the supporting structure will support the loads. In choosing to use either of these devices as tie backs one must consider that the tieback line will lay horizontally under tension across the roof surface and may present a tripping hazard and/or blocking hazard. It is not acceptable to use either of these devices as Fall Arrest anchorage when they are configured in a tie back manor where the lifeline runs horizontally across the roof as they are not positively tied to the structure. To use either of these devices as PFA anchorage the life line must be vertical and the device must be tied back.

**Note:** When used as a Fall Arrest anchorage for vertical lifelines in suspended scaffold application:

- Properly planned anchorages should be used if available
- Use parapet clamp at minimum reach
- Must be tied back to proper anchorage
- Qualified person must evaluate the parapet walls to ensure it can support loads
- Use only certified ANSI shock absorber lanyards
- keep slack out of vertical lifelines
- Refer to OSHA 1926 Subpart M for Fall Protection requirements



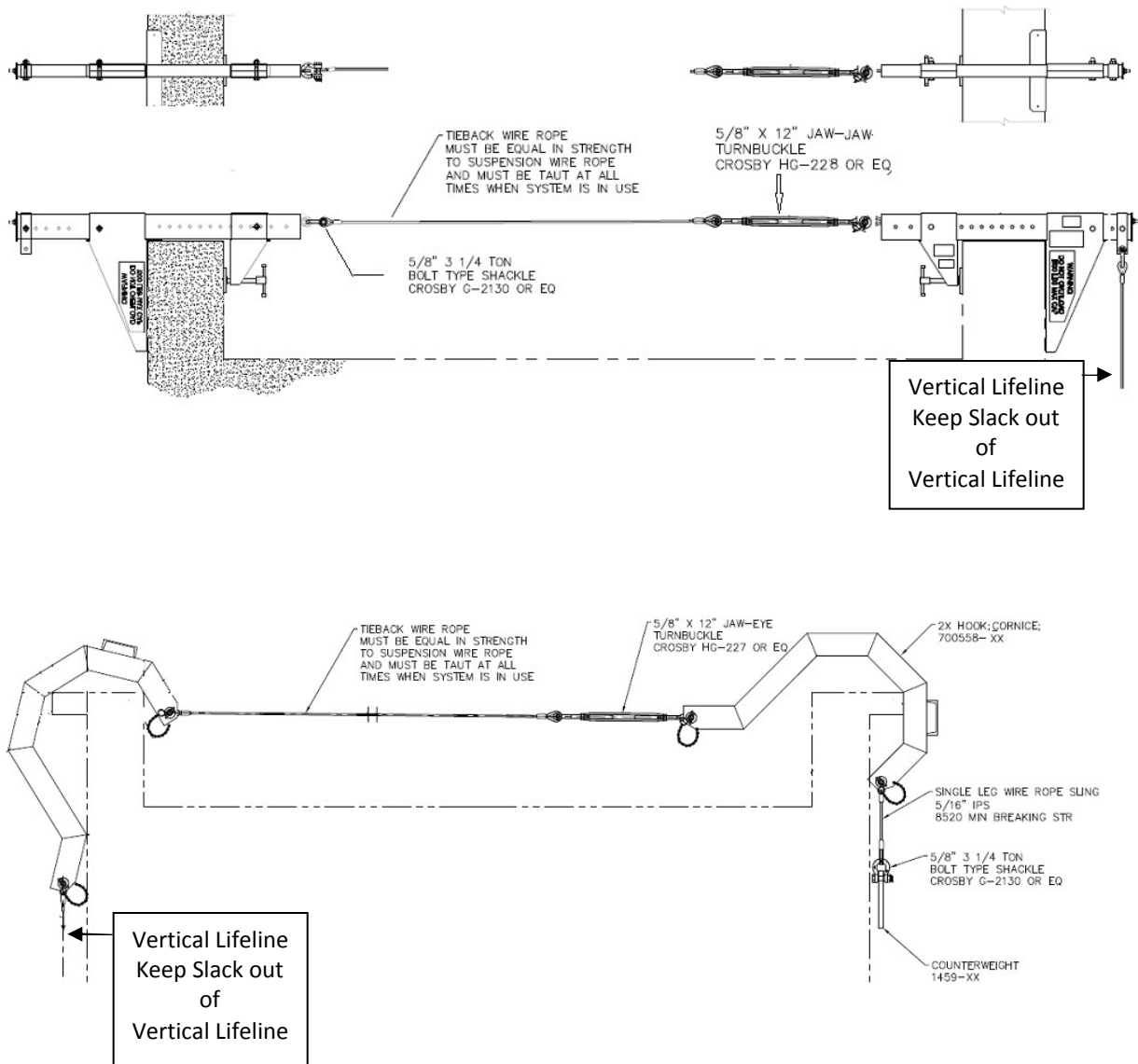
# Product Update

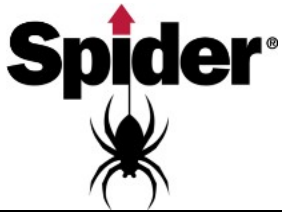
SER 16-007

Usage of 8-0044 Parapet Clamp & 700558 Cornice Hook  
as Tie Back & Fall Arrest Anchorage

March 15, 2016

## Correct usage as Tie back for primary rigging as Vertical lifeline anchorage





## Product Update

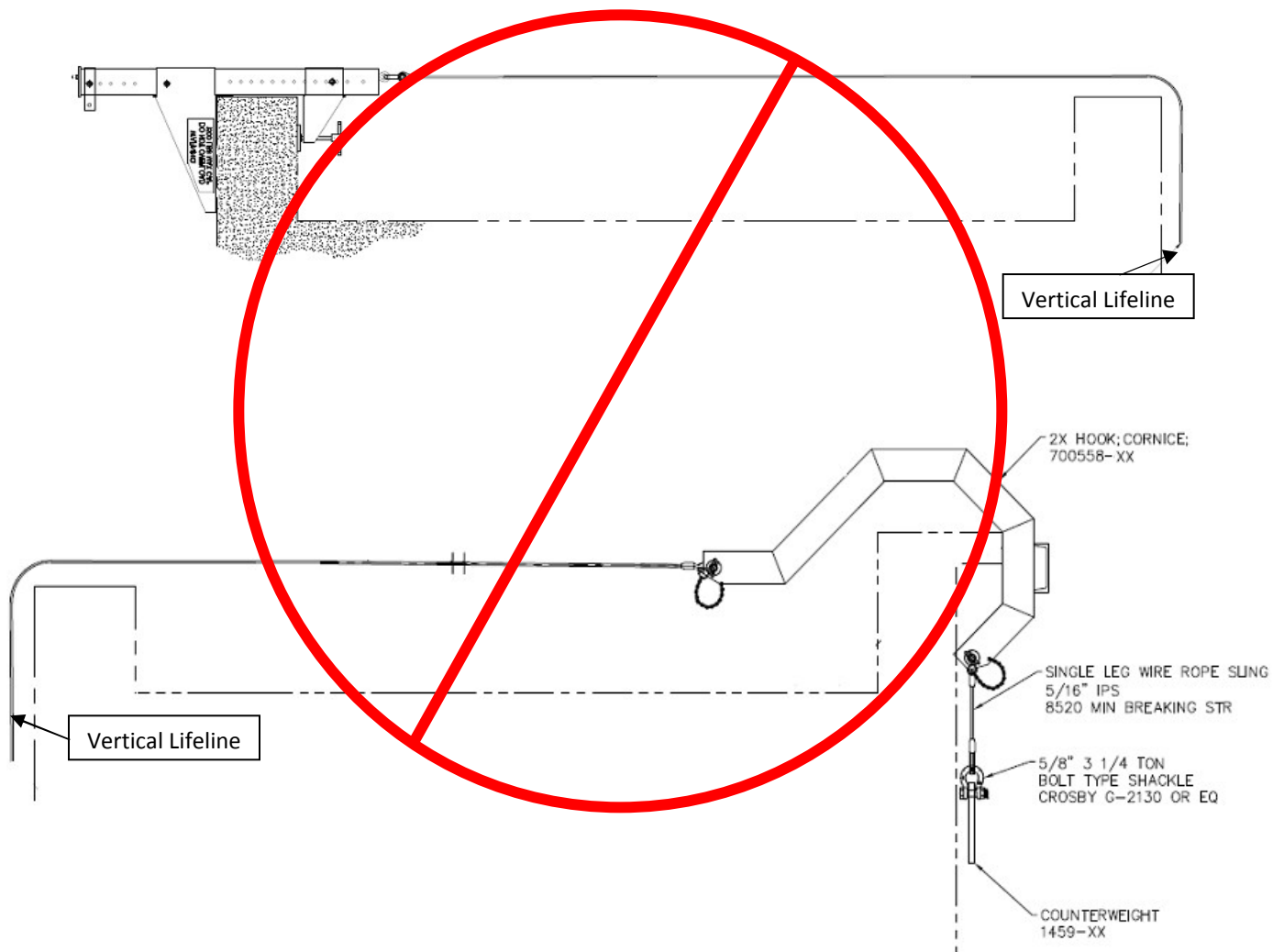
SER 16-007

Usage of 8-0044 Parapet Clamp & 700558 Cornice Hook  
as Tie Back & Fall Arrest Anchorage

March 15, 2016

### Incorrect usage of Tie back for primary rigging to be use as Vertical lifeline anchorage Do not use in this manner

- Not Designed to be used as fall arrest anchor in orientation shown
- Cornice Hook could move
- Parapet Clamp and Cornice Hook are designed for static load and not a shock force
- Both Devices are not positively attached to structure and must be tied back



**ALL EQUIPMENT MUST BE USED AS INTENDED. FOR APPLICATIONS NOT LISTED IN OUR CATALOG, LITERATURE OR WEBSITE-----IT MUST BE REVIEWED BY SPIDER ENGINEERING BEFORE IT CAN BE USED.**

#### ACCOMPANYING DOCUMENTS