	Service Instruction SER13-012	<b>Winch Assembly Use and Inspections</b>
---	----------------------------------	---

#### Application table

<b>Application:</b>	<b>Use and Inspections of the cable winch</b>
<b>Reason:</b>	<b>Increase safety</b>
<b>Frequency</b>	<b>Before each use</b>
<b>Priority:</b>	<b>Required / MANDATORY</b>

#### Background

Spider has received reports that the cable winch used on the 360 BAP platforms has not operated as intended. After investigating several incidents we have been able to provide operator instruction to prevent unintended operation.

#### Solution

The cable on the winch drum should always remain under tension load so that the compression brake will work as intended on the winch. If tension is released, proper winding procedures must be followed to restore tension so that unintended operation does not occur.

When using the winch to move the platform away from the turbine tower it is critical that the operator hear the “ratcheting sound” of the winch. If the operator does not hear the ratcheting sound, they should not continue to turn the handle. They will need to reverse the handle direction and follow the instructions on the label of the winch.

#### Procedure

- 1) Before operating this product, Read and understand all instructions provided in this Service Instruction.
- 2) Before operating this product, Read and understand all product label instructions affixed to the product.
- 3) Visually inspect the ratchet spring is fully engaged in the wedge assembly as show in the attached “Daily Checklist Procedure and Log”.
- 4) Visually inspect the platform and all platform components for damaged, loose or missing parts. Make sure that all connections are secure and that all pieces are in place without damage.
- 5) If any component does not pass the “Daily Checklist Procedure”, DO NOT USE UNTIL IT HAS BEEN REPAIRED.

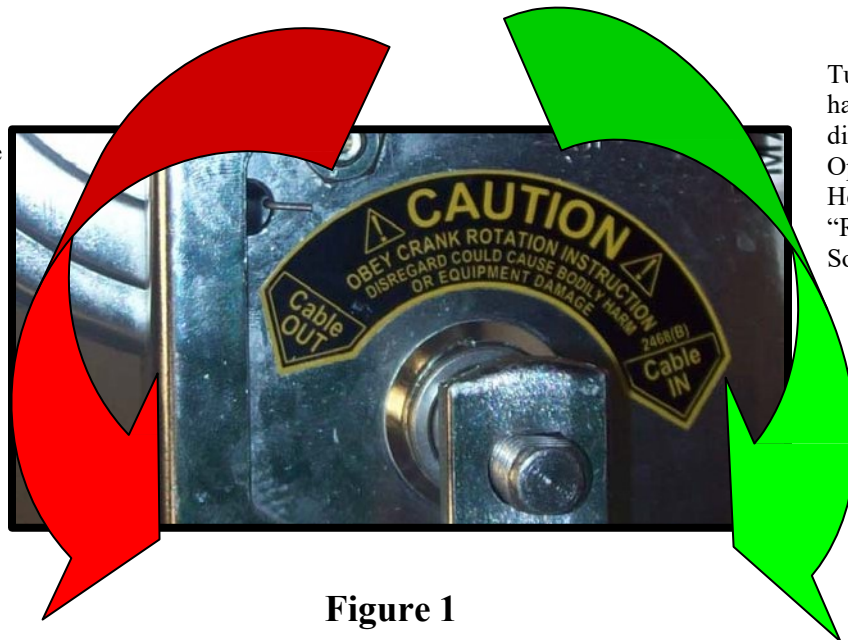
***WARNING: If the cable line can be pulled from the winch without operating the crank handle, then the winch is not operating correctly for use with this platform and the platform must not be raised off the ground!***

***When using the winch to push the platform away from the turbine tower it is critical that the operator hear the “ratcheting sound” of the winch. If the operator does not hear the ratcheting sound, they should not continue to turn the handle. They will need to reverse the handle direction and follow the instructions on the label of the winch.***

***When using the winch to push the platform away from the turbine tower it is critical that the operator hear the “ratcheting sound” of the winch.***

***WHILE MOVING THE PLATFORM BACK TO THE TOWER IT IS OK TO NOT HEAR THE RATCHETING SOUND!***

Turning the handle in this direction the Operator will not hear a “Ratcheting Sound”.

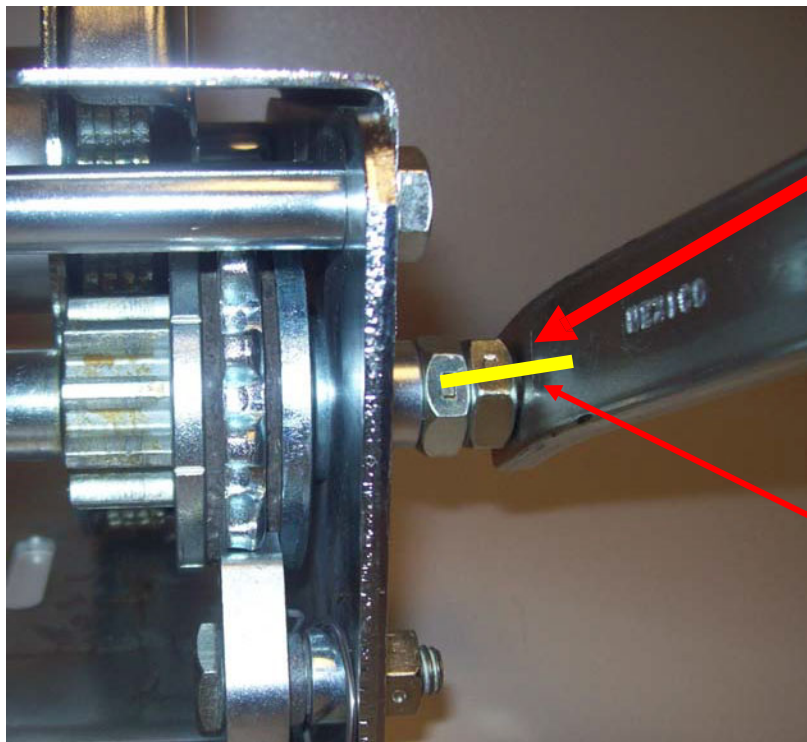


Turning the handle in this direction the Operator Will Hear The “Ratcheting Sound”.

**Figure 1**

**WARNING:**

1. Do not move the jam nut assembly on the handle shaft. Jam nuts are not aligned when properly installed. Note Figure 2.
2. Do not attempt to use any ratchet with socket arrangement to crank this winch assembly. Jam nuts are not to be aligned to allow a socket with ratchet use.



**NOTE:** Position of the jam nuts should be as shown in this picture.

Add a mark with a paint marker to show position of the two jam nuts relative to the crank handle. Inspect daily for signs of tampering or significant movement (Greater than  $\frac{1}{4}$ "). (Shown as yellow line here.)

**Figure 2**

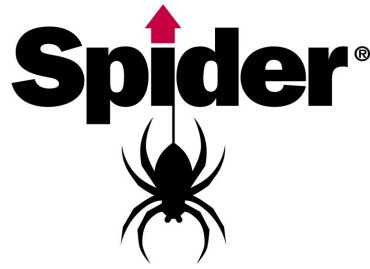
**Included Attachments**

- Fulton Winch Instructions
- Daily Checklist Procedure and Log

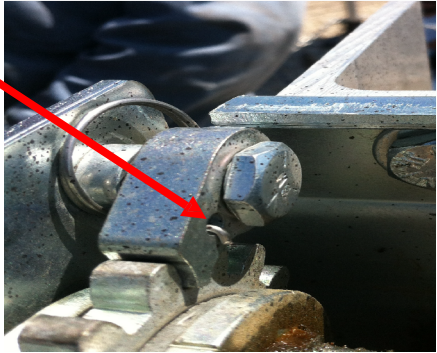
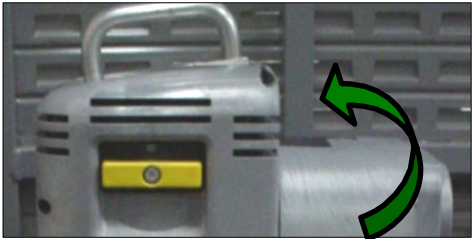
**Other Reference Materials**

- 706770-1 BAP 360 Installation Instructions
- 707215-1 BAP360 Operator's Manual

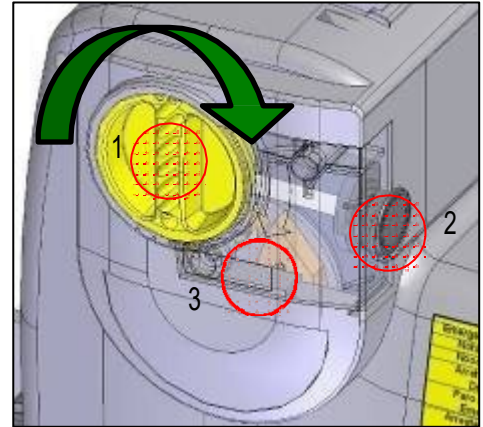
As with all Service Instructions, if you are unsure about anything contained in this document, contact Spider Product Support at 1-855-457-8513 or at [ProductSupport@SpiderStaging.com](mailto:ProductSupport@SpiderStaging.com)





Perform the Daily Checklist procedure on the following page each time the Platform is used, and record the results on the Daily Checklist Log.

TESTS MUST BE CARRIED OUT BEFORE EACH USE OF THE PLATFORM	
1	Visually inspect the rigging points and ensure that the rigging slings, shackles, and wire ropes are secure and properly connected.
2	Visually inspect the suspension ropes for kinking, crushing, bird caging or any other distortion of the wire rope structure.
3	Using a tire pressure gauge, insure that the sub-frame to tower casters are between 50-60 lbs air pressure. Inflate as necessary.
4	<div> <p>Verify the function of the sub-frame winch:</p> <ul style="list-style-type: none"> <li>a) Visually inspect the ratchet spring is fully engaged in the wedge assembly as shown.</li> <li>b) Physically operate the winch to insure that the cable pays out and back in. The winch only ratchets in one direction and must be cranked to operate in both directions.</li> <li>c) If line can be pulled from the winch without operating the crank handle then the winch is not operating correctly and the platform must not be raised off the ground.</li> </ul> </div> <div>  </div>
5	Visually inspect the platform for damaged, loose or missing parts. Ensure that all connections are secure and that all pieces are in place with no damage.
6	Push the Emergency Stop button and verify that the hoist will not operate.
7	Reset the Emergency Stop button and verify normal operation of hoist controls.
8	<div> <p>Verify function of Manual Descent device:</p> <ul style="list-style-type: none"> <li>a) Run the platform 2-4 feet off the ground and stop.</li> <li>b) Pause for 30 seconds to verify rope-sheave friction.</li> <li>c) Pull the manual descent lever up. Verify that the platform lowers at a controlled speed.</li> </ul> </div> <div>  </div>

9	<p>Verify function of the Overspeed Safety Device:</p> <ol style="list-style-type: none"> <li>Run the platform 5 feet off the ground and stop. Press the overspeed governor manual trip button (2).</li> <li>Pull the manual descent lever up. Verify that the hoist locks and will not lower further.</li> <li>Operate the Down control. Verify that the hoist remains in a locked position.</li> <li>To reset the overspeed governor, power the lift up about 6" and turn the reset knob (1) clockwise until the hoist overspeed safety device clicks back into its 'open' position and is reset.</li> <li>Verify that the lift will operate in both the Up and Down directions.</li> <li>Verify that the flywheel (3) turns as the lift travels up and down.</li> <li>See the Operating Instructions to release the Overspeed safety device if power has failed.</li> </ol>
---	--



	<p><b>WARNING:</b> Make sure that the Overspeed Safety Device is reset before running the platform. Failure to do so may result in a rope jam.</p>
	<p><b>CAUTION:</b> DO NOT USE EQUIPMENT THAT IS NOT OPERATING PROPERLY. NEVER OVERRIDE LIMIT SWITCHES AND SAFETY DEVICES.</p>

Pre-functional Check	
o	Voltage measurement at end of power cord within limits.
o	Drive unit up.
o	Drive unit down.
o	Trip over-speed (verify unit will not go down).
o	Drive unit up and reset over-speed fully (verify green indication is fully engaged in window).
o	Trip the E-stop (verify unit will not go in either direction).
o	Reset E-stop.
o	Verify manual descent operates normally.
o	Verify 3/8" ratchet with 1/2" socket, as well as 4-mm T handle to remove cover are both onboard.

Signature\_\_\_\_\_ Date\_\_\_\_\_