

SER 12-005

**Composite Fairlead
708041-1 Guide Tool ;
Wire rope installation**

Application table:

| | |
|---------------------|---|
| Application: | Spider Drum Hoist |
| Reason: | New tool release P/N 708041-1 Guide Tool; Wire Rope Installation |
| Frequency | Information |
| Priority: | Low |

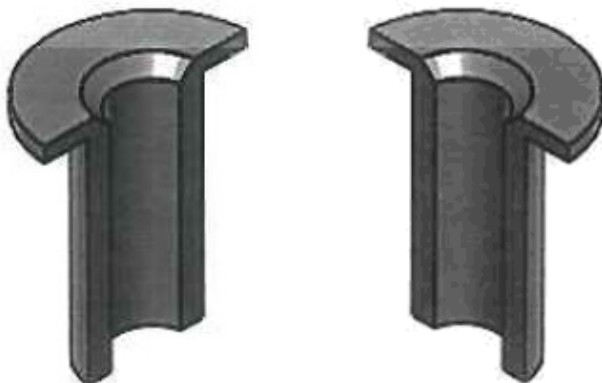
Background:

A new wire rope installation guide tool (708041-1) is available to aid installation of the wire rope preventing wear on the Composite Fairlead. Use with Wire Rope Tension Clamp (P/N 3619-01 or 3619-02).

The Composite Fairlead used on the Spider Drum Hoists has a built in Wear Limit Indicator Ring that will indicate when the Fairlead (701986-2) should be replaced.

Details:

Wire Rope installation Guide Tool Part # 708041-1



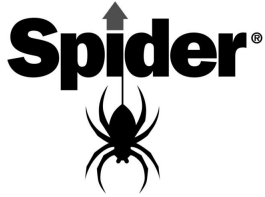
708041-1 Guide Tool; Wire Rope Install

Insert the two halves of the installation guide tool into the fairlead around the wire rope. The flanged ends will rest on the composite fairlead holding it in place as the wire rope is feed through the guide tool preventing wear to the composite fairlead. Use with Wire Rope Tensioning Clamp.

Spider®
365 Upland Drive
Seattle, WA 98188 USA

Phone: 1-877-774-3370
E-mail: ProductSupport@safeworks.com
Internet: www.spiderstaging.com

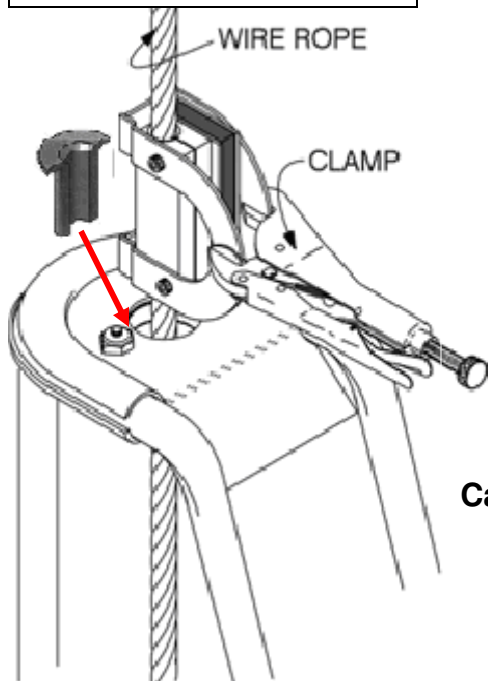
SafeWorks®, LLC
© 2012



SER 12-005

Composite Fairlead 708041-1 Guide Tool ; Wire rope installation

Insert the two halves of the installation guide tool into the fairlead around the wire rope



Wire Rope Tensioning Clamp

There are two sizes of clamps available:

SA-3619 for 5/16 in. and **3619-02** for 3/8 in. wire rope.

1. With the wire rope installed, clamp the tensioning blocks on the wire rope just above the wire rope guide.
2. Adjust the clamp so the jaws just close when the wire rope is clamped in the grooves on the blocks.
3. While running the stage in the up direction, guide the wire rope onto the drum using a 33-in. wooden pry bar bearing against the center post of the fairlead.
4. Do not run a splice into the tensioning blocks. When all the wire rope has been installed, apply the regular tension holder and remove the clamp

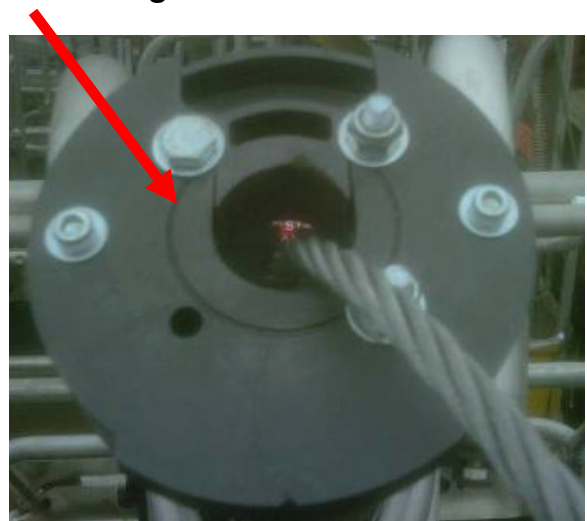
Caution

- Make sure the wire rope is well lubricated. It should
- Have no kinks and no broken or abraded wires.
- If the clamp is damaged or worn, do not repair it.
- Use the clamp only to apply tension to the wire rope as
- Instructed above—it has no other use.
- With IWRC wire rope, do not clamp to tight—this can cause birdcaging.

Inspection: Wear Limits Indicator Ring Line

When the wear from the wire rope wears from the inside of the opening out into wear limit indicator ring line edge; then the part must be changed. The new Composite Fairlead assembly can be replaced with out having to de-rope the entire drum.

Part Number 701986-2 FAIRLEAD ASSY;
TENSION HOLDER



Spider®
365 Upland Drive
Seattle, WA 98188 USA

Phone: 1-877-774-3370
E-mail: ProductSupport@safeworks.com
Internet: www.spiderstaging.com

SafeWorks®, LLC
© 2012