

Application table

Application:	Modulo 18 connector pin modification
Reason:	Install 702181-1 pins in place of Safefix connector pins
Frequency:	One time
Priority:	Optional

Background: Safefix pins can break when not turned 90 degrees before punching out of retaining clip causing down time and repair cost.

Solution: Install 702181-1 hitch pin that is less susceptible to damage.

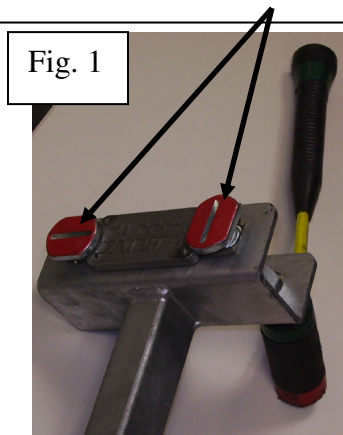
Procedures:

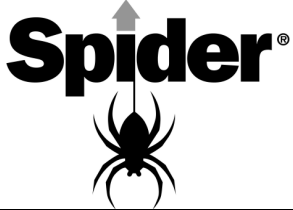
<u>Tools:</u> 4 mm Allen Wrench Large Flathead Screwdriver Soft Face Mallet	<u>Shop Supplies:</u>
---	------------------------------

<u>Parts Required:</u> p/n 702181-1 1 per hole Pin; Hitch,75x2.5 W / Lanyard
--

Details

1. Using Large Flathead Screwdriver turn 2 **61.050 Safefix Pins** so slot is vertical and tap out with Soft Face Mallet. See Fig. 1





2. Using 4mm Allen Wrench remove the two screws and **61.050 Safefix Spring Pin Retaining Assembly** and discard. See Fig 2

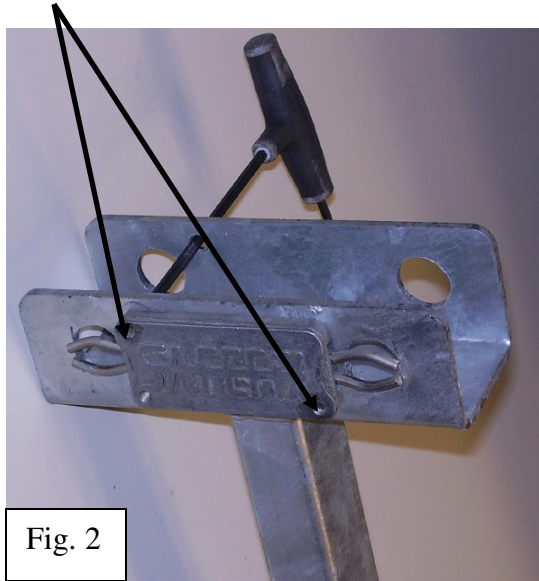


Fig. 2

3. Insert **702181-1 Pin; Hitch 75 x 2.5 W / Lanyard** into existing holes and secure with supplied retaining pin. See Fig 3

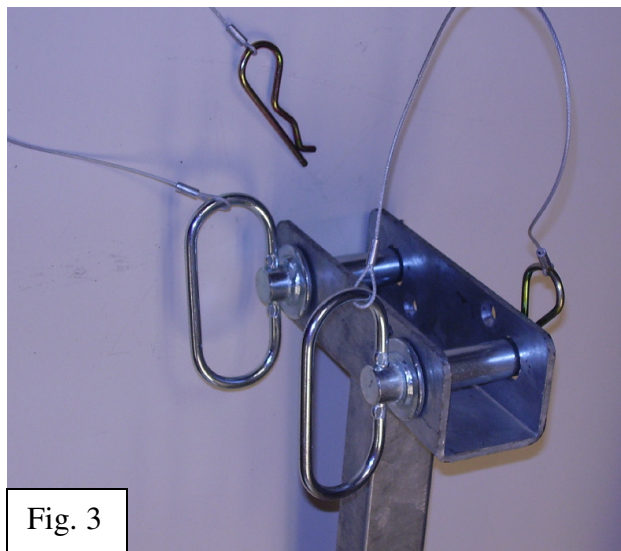


Fig. 3

Any Questions - Call Spider at 1-206-394-5319