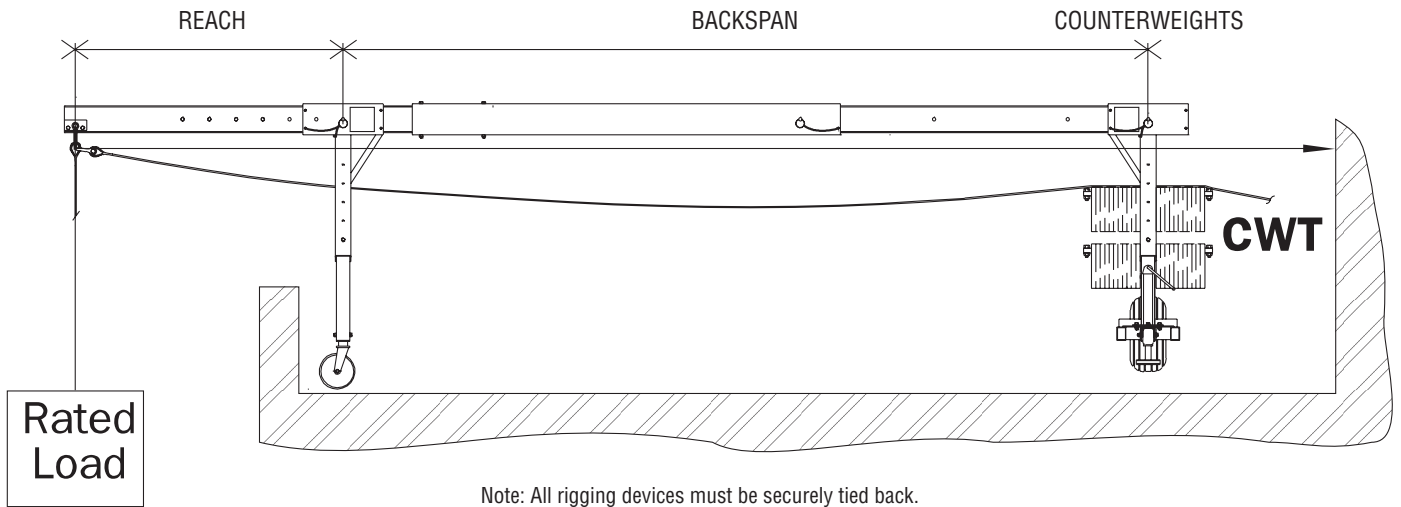


Counterweight Formula



$$\text{Counterweights} = \frac{(4) \times (\text{Rated hoist capacity}) \times (\text{Reach})}{(\text{Backspan})}$$

Labels on all Spider devices requiring counterweights provide actual number of 50 lb. (22.7 kg) weights needed or total counterweight required for each reach. No guesses. No math!

Consult your Spider professional for custom-engineered rigging solutions

Call or click for more information
1-877-774-3370
www.spiderstaging.com