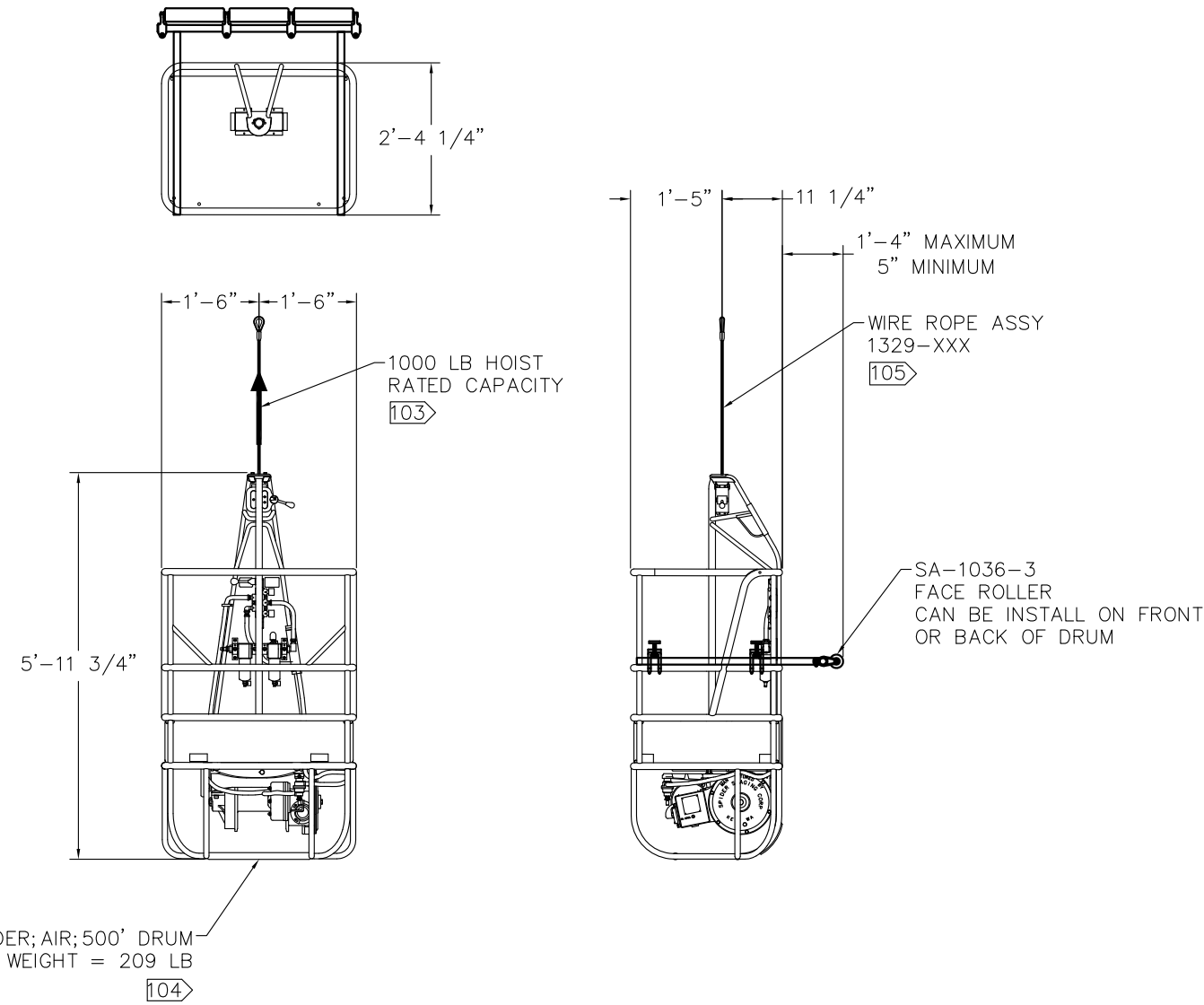


NOTES:

- 101. USE OF SUSPENDED SCAFFOLDING SHALL COMPLY WITH OSHA 29 CFR 1926.451(f) AND ANY APPLICABLE LOCAL REGULATIONS.
- 102. ALL PERSONNEL ON SUSPENDED SCAFFOLDING SHALL HAVE AN INDEPENDENT FALL ARREST SYSTEM THAT COMPLIES WITH OSHA 29 CFR 1926.451(g) AND ANY APPLICABLE LOCAL REGULATIONS.
- 103. SUPPORTING STRUCTURE MUST HOLD 4000 LB WITHOUT FAILURE.
- 104. REFER TO SPIDER STAGING OPERATOR'S MANUAL 400540 FOR SPECIFIC INSTRUCTIONS FOR OPERATING THE ST-17 DRUM HOIST.
- 105. SEE GA-1029 FOR WIRE ROPE DETAILS AND WEIGHT.
- 106. LIVE LOAD CAPACITY IS EQUAL TO THE GROSS CAPACITY MINUS THE WEIGHT OF THE BASKET, WIRE ROPE, ACCESSORIES AND POWER CORD/AIR HOSE LOAD. ALLOWABLE NUMBER OF PERSONNEL SHALL BE CALCULATED AT 250 LB PER PERSON

106

MAXIMUM RATED GROSS CAPACITY
1000 LB GROSS
DO NOT EXCEED !!!



ST-17 BASKET

REV 1	ECO BETA RELEASED	DATE 11-12-2013	BY TSM	CK JTA
 <small>A Division of SafeWorks, LLC</small>		MATERIAL: THIS DRAWING IS THE PROPERTY OF SAFEWORKS, LLC. AND IS NOT TO BE COPIED OR REPRODUCED WITHOUT THE WRITTEN CONSENT OF SAFEWORKS, LLC.		
DRAWN BY TSM DATE 5-17-13		TITLE SPIDER ST-17 BASKET		
ENG JTA SCALE D 3/4":1'-0"	DRAWING NUMBER GA1026		1 OF 1	