

## ■ Anchorage Connectors

Used to join the connecting device to the anchorage when a direct connection does not exist

Maximum Angle  
180° (Straight)

Minimum Angle  
120°

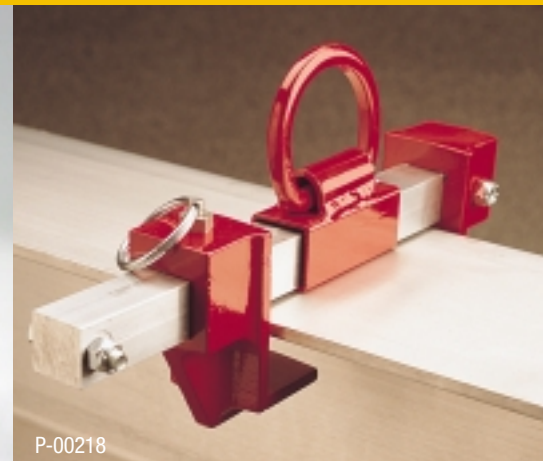
SC-40  
2 Req



P-00227



BD-00008



P-00218

### Beam Clamps

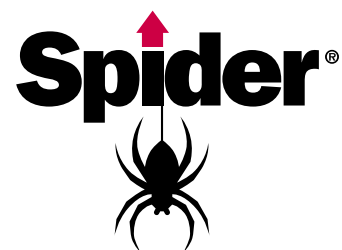
A personal mobile anchor point when attaching to steel I-beams or columns

#### Horizontal Beam Clamps

- May be used on top or bottom flanges
- Portable
- Lightweight aluminum
- Quick to install
- Spring locking for easy adjustment
- Load Capacity: 5000 lbs.
- Part # BD-00008 Fits beams of 4"-12"
- Part # P-00218 Fits beams of 3 1/2"-6"

#### Vertical Beam Clamps

- For use on vertical columns for stationary tie-off
- Quick to install
- Durable
- Fits beams of 4"-12"
- Load Capacity: 5000 lbs.
- Part # P-00227

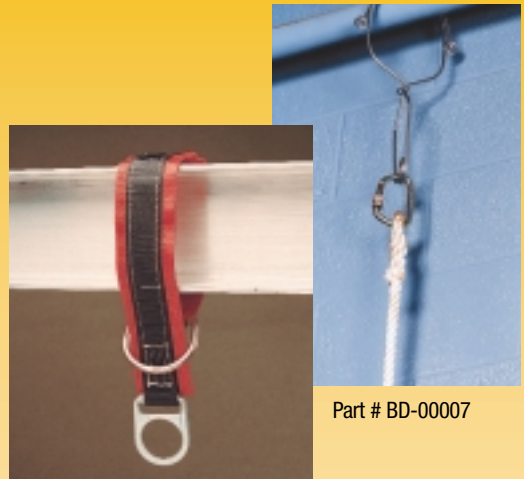


A Division of SafeWorks, LLC

### Cross Arm Straps

The Spider cross-arm strap wraps around I-beams and other structures forming a secure attachment point for lanyards and other connecting devices. The strap is capable of supporting 5000 lbs.

- Lightweight
- Durable
- Portable
- 2" pass-through
- Lengths: 36", 48", and 72"
- Load capacity: 5000 lbs.



Part # BD-00007

### Wire Hooks

Stainless steel wire hook connects to various anchorages including railings, small I-beams, angle iron and scaffolding. Simply squeeze the spring-loaded hook and slip the large opening over the approved structure.

Part Numbers	Descriptions
BD-00007	Wire Hook Stainless steel, spring-loaded wire hook
BD-00006	6' Cross-Arm Strap 2" (50mm) nylon webbing strap features a 2" (50mm) D-ring which slips through a 3" (76mm) D-ring
BD-00011	3' Cross-Arm Strap 2" (50mm) nylon webbing strap features a 2" (50mm) D-ring which slips through a 3" (76mm) D-ring
BD-00014	4' Cross-Arm Strap 2" (50mm) nylon webbing strap features a 2" (50mm) D-ring which slips through a 3" (76mm) D-ring



Part # P-00245

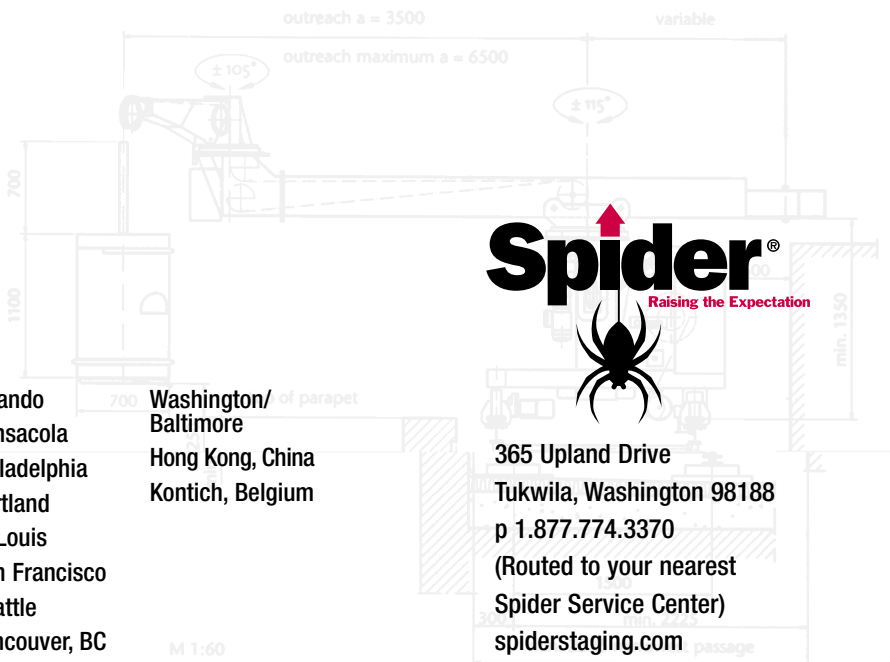
### Termination Plates

Eliminate knots in your lifeline. Knots can reduce lifeline strength by as much as 50% or more, depending on the type of knot.

Spider anchorage connectors meet all applicable OSHA requirements and ANSI standards, including ANSI Z359.1

### Spider facilities

- |           |             |               |                       |
|-----------|-------------|---------------|-----------------------|
| Atlanta   | Houston     | Orlando       | Washington/ Baltimore |
| Boston    | Kansas City | Pensacola     | Hong Kong, China      |
| Charlotte | Las Vegas   | Philadelphia  | Kontich, Belgium      |
| Chicago   | Los Angeles | Portland      |                       |
| Cleveland | Miami       | St Louis      |                       |
| Dallas    | Minneapolis | San Francisco |                       |
| Denver    | New Orleans | Seattle       |                       |
| Detroit   | New York    | Vancouver, BC |                       |



365 Upland Drive  
Tukwila, Washington 98188  
p 1.877.774.3370  
(Routed to your nearest  
Spider Service Center)  
spiderstaging.com