

## Trump International Hotel & Tower – Chicago, IL

**Contractors:** Brand Scaffold, Poblocki Sign Company

**Project Scope:** The customers required access to the façade of Chicago’s second tallest skyscraper, Trump International Hotel and Tower, for the installation of the massive stainless steel, LED backlit ‘TRUMP’ letters to the building’s 15<sup>th</sup> floor level.

**Challenges:**

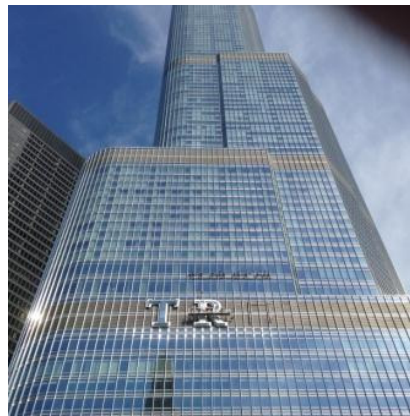
- Weighing an average of 900 lbs, each letter varied in size. Collectively the signage spanned 140 linear feet.
- The structure’s unique rigging challenges required a thoughtful solution to access the 15<sup>th</sup> floor level while minimizing disruption to the building’s occupants.

**Solutions:** Brand Scaffold rented and rigged two 40-ft swing stages powered by Spider’s workhorse SC1000 traction hoists and equipped with walk-thru stirrups for the six-week duration of the project. This granted the installer, Poblocki Sign Company, safe and secure access to the façade for the sign installation.

Additionally, a monorail trolley beam was installed at the 17<sup>th</sup> floor level to enable an SC1500 material hoist to be mobilized and repositioned as needed when lifting each of the massive letters safely into place.

When considering the structure’s unique rigging challenges, Spider collaborated with contractors to temporarily remove a section of windows on the 17<sup>th</sup> floor and anchor the outriggers directly into the concrete floor slabs, two stories above the installation site. A staging area was established on the ground level to store and assemble the swing stage equipment prior to the installation, and a portion of Chicago’s famous Riverwalk below the installation site was closed to pedestrian traffic throughout the project’s duration to ensure public safety.

**Customer Testimonial:** “As a long-time customer of Spider equipment, we couldn’t be happier with their equipment’s ease of use,” commented Mark Eesley, Installations, Service and Building Manger with Poblocki Sign Company. “Even with multiple rigging changes, all trades involved on this complex project worked seamlessly together to safely install the signage according to the tight timeline.”



- Atlanta
- Boston
- Charlotte
- Chicago
- Cleveland
- Dallas
- Denver
- Detroit
- Houston
- Kansas City
- Las Vegas / S. California
- Minneapolis
- New Orleans
- New York
- Orlando
- Pensacola
- Philadelphia
- Portland
- St. Louis
- San Francisco
- Seattle
- Washington D.C.
- Antwerp
- Barcelona
- Dubai
- Melbourne
- Panama City
- Vancouver

**About Spider:**

Founded in 1947, Spider, a division of SafeWorks, created the powered suspended access business by introducing the well-known Spider basket. Since then, our product and service offering has expanded greatly to serve the needs of an ever-growing marketplace. Spider is the largest manufacturer and distributor of access and safety solutions in North America, serving more customers from more locations with a wider variety of products and services than any other company. From baskets, traction hoist and platform rental, to safety and training, to specialty-engineered products - Spider has a strong team of professionals, along with a national network of sales, service and support capabilities to provide you with the most reliable access solutions available.



- Atlanta
- Boston
- Charlotte
- Chicago
- Cleveland
- Dallas
- Denver
- Detroit
- Houston
- Kansas City
- Las Vegas / S. California
- Minneapolis
- New Orleans
- New York
- Orlando
- Pensacola
- Philadelphia
- Portland
- St. Louis
- San Francisco
- Seattle
- Washington D.C.
- Antwerp
- Barcelona
- Dubai
- Melbourne
- Panama City
- Vancouver

**Spider, a division of SafeWorks**

365 Upland Drive, Seattle, WA 98188

Telephone: 877-774-3370 - Fax: 206-575-6240 - Email: [spider@spiderstaging.com](mailto:spider@spiderstaging.com)