

## SC1000 and SC1500

Spider SC1000 and SC1500 hoists deliver the robust performance and rugged construction contractors have long recognized in Spider equipment. The refinements in handling, service and efficiency make this hoist Spider's choice for its own rental fleet. Spider has **cut its fleet repair spending in half** with the SC1000. Best in class performance and lowest total cost of ownership – just what you'd expect from the market leader.



### Durability

Nearly impossible to jam wire rope

Engineered polymer covers prevent damage to expensive components and prevent debris build-up

Long mechanical part life

Designed for easy clean-up and maintenance

### Field-Tested Operation

Most extensively tested hoist ever

Rigorous attention to field results

Disciplined design to satisfy our internal fleet needs

### Reliability means Lower Total Cost of Ownership

Spider performs over 11,000 service events on traction hoists every year – more than 40 a day, day in, day out. The data speaks for itself. The SC1000 series hoists are serviced in 35% fewer labor hours and take 70% less in parts costs compared with other models.

The average service ticket for customer-owned SC1000s is more than 50% less than comparable models. Hoist-related service calls are down 50% with the SC1000 vs. our prior hoist model.

At Spider, we don't just make the product, we own it ourselves. We live with our cost of ownership, just as our customers who invest in Spider equipment for their own fleet. Spider owns a significant fleet of SC1000s – these savings are real.

**Do the math: the SC1000 is the hoist with the lowest total cost of ownership.**

### 50% Lower Cost to Service Annually

Less need for booster transformers – a \$700 savings

Simpler to train on – less lost production

50% fewer power related service calls – less lost production

Simplest power pack to repair – 5 minutes to back to work with an unskilled worker means less lost production

Reduced risk of injury due to low weight and 3 ergonomic handles



### Key Features:

- Deep operating range  
208V +10%/-15% Single Phase,  
+10%/-10% Three Phase
- Electrical improvements extend  
component life
- Long mechanical component life
- Simplified operation
- English/Spanish labels & Operators'  
Manuals
- Reliable load dependent traction
- Controlled descent
- Remote-ready
- Power indicator light
- Built-in overspeed brake
- Hour meter
- Polymer covers to prevent debris  
accumulation & protect more costly  
components
- Optional: secondary wire rope brake,  
overload kit, top limit switch

### Frequently used accessories:

- 9970 Protective Cover
- 701301-2 Bottom Arc  
Guard Assembly
- 4485 Top Arc Guard  
Assembly
- 8-0406 20° Adapter for  
Walk-Thru Stirrup

Specifications:	SC1000 (9005)	SC1500 (9015)
Gross Load Capacity:	1,000 lbs. (454 kg)	1,500 lbs. (680 kg)
Dimensions:	14 x 12 x 24 in. (356 x 305 x 610 mm) Fits through 18 in. (46 mm) opening	14 x 12 x 24 in. (356 x 305 x 610 mm)
Weight:	99 lbs. (45 kg) or 103 lbs. (47 kg) for 110V	101 lbs. (46 kg)
Travel Speed:	35 ft/min (10.7 m/min)	35 ft/min (10.7 m/min)
Power/Operating Range:	208V +10%/-15% Single Phase or 110V +/-10%	208V +10%/-15% Single Phase 208V +10%/-10% Three Phase
Wire Rope Diameter:	5/16 in., 8 mm or 8.4 mm	5/16 in., 8 mm or 8.4 mm
Wire Rope Construction:	5 x 26, 6 x 19, or 6 x 31 IWRC or FC Right Regular Lay IPS or EIPS Performed, Galvanized or Bright	5 x 26 8.4 mm IWRC or FC Right Regular Lay IPS or EIPS Performed, Galvanized or Bright
Construction:	Aluminum, steel and engineered polymer	Aluminum, steel and engineered polymer





### Specifications: SC1000A

#### Gross Load Capacity:

750 lbs. (341 kg) @ 60 psi  
 1,000 lbs. (454 kg) @ 90 psi  
 1,500 lbs. (680 kg) @ 110 psi

#### Dimensions:

12 x 14 x 20.5 in.  
 (305 x 356 x 521 mm)

#### Weight:

88 lbs. (39 kg)

#### Travel Speed:

Up to 35 ft/min (10.7 m/min)

#### Power Requirements:

750 lbs. (340 kg): 90 psi  
 1,000 lbs. (454 kg): 100 psi @ 70 cfm  
 1,500 lbs. (680 kg): 110 psi @ 70 cfm

#### Wire Rope Capacity:

5/16 in., 8 mm or 8.4 mm

#### Wire Rope Size and Construction:

5/16 in. (8 mm) Seale Construction  
 6x19 or 5x26

## Spider SC1000A hoist offers the best of proven technology and innovative features.

### Innovative Design:

Flexibility of multiple load ratings from one hoist – labeled 750/1000/1500 lb. rated with 90/100/110 PSI at max. 70 cfm

Load controlled by PSI – no need to open hoist to reset load capacity

Quiet operation – only 92 dB compared to industry standard of 110 dB

Air power pack removable (1-bolt) to switch air hoist to electric for fleet flexibility

Filter Lubricator Assembly included with hoist and can be mounted either to the hoist or to a work cage, Spider Mod, Modulo or knock down modular stages

2 polymer covers (mainframe & over-speed)

Simplified design cuts service time: basic service in 10 minutes and overhaul is 1 hour

### Durability:

Simplified ergonomics – easier handle operation, more comfortable control descent

Compact, ergonomic design to survive transportation and delivery better

Filter Lubricator Assembly features more robust connection to mounting plate to reduce breakage

Air brake lines are rubber, more robust & flexible

IP65 Rated Enclosed Brake

Protective coating on internal motor & brake components to protect against rust

Remote ready – accepts 9-61, 8-0399 and 701303 remotes

Dual wire rope optional – bolt-in installation for aftermarket hoists

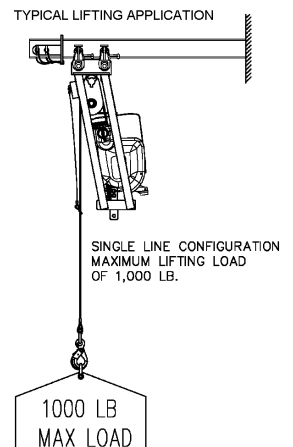
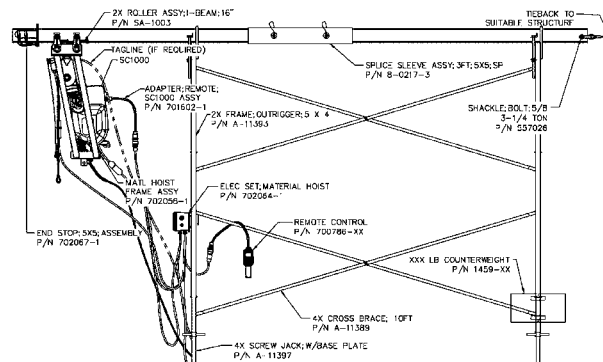
US and Canadian Underwriters Laboratories® classifications

### Field Tested Operation:

Extensively tested traction system – nearly impossible to jam wire rope

Wire rope can't continue to build up around the sheave if operated after overspeed is tripped

Same trusted Gast® air motor, valve & air motor parts, and oiler filter unit for ease of supply and better inventory availability



SC1000 hoist includes 8-0107 Filter Lubricator Assembly. Filter lubricator mounts to hoist on stirrup or on workcage or modular platform guardrail.

# The Choice for YOU

The SC1000 series hoists are Spider's **most reliable** and **lowest total cost** hoists to own. They deliver the reliability and affordability professional contractors value most. Whether you're looking to rent or to add to your equipment fleet, the SC1000 is your hoist of choice. Spider partners with the best-managed contractors in North America and beyond. These owners and leaders demand reliability and they put their trust and confidence in Spider – the market leader for more than 60 years!



## Spider invests in UL® and CUL Certification for your Safety

Spider designs, engineers, builds and tests its hoists in accordance with the Underwriters Laboratories UL1323 standard for hoists as required by OSHA under OSHA 1910.28(i)(1) &(g)(3) and 1926.451(d)(13). Employers are required under OSHA to use hoists tested by both a Nationally Recognized Testing Laboratory and a Qualified Testing Laboratory, depending on which code section applies. Underwriters Laboratory (UL®) is one of three Nationally Recognized Testing Laboratories accredited to test to the UL1323 standard.

Spider makes the choice to list our hoists with UL® because it provides Spider equipment users equipment that is safer than products listed by other labs. This gives Spider customers peace of mind. UL® interprets the UL1323 test standard with the intent from which this code was written and rigorously applies the UL1323 code to its initial performance testing protocol and its ongoing certification program.

Not all manufacturers invest in UL® listing. Our hoists are UL® listed. To verify the listing status, see that SafeWorks earned its UL Classification and continues to maintain this listing in file TUFV.SA5062 at [www.UL.com](http://www.UL.com).

Examiners employed by Underwriters Laboratories regularly inspect our hoists during production in our factories to verify consistent sustained production of the products as designed and originally tested and listed. This drives a safer, more reliable product for our users.

**Spider**  
**365 Upland Drive**  
**Seattle WA 98188**  
**877. 774. 3370**  
**[www.spiderstaging.com](http://www.spiderstaging.com)**

*Photos are illustrative only. For operating instructions, consult the Owner's Manual.*

