

■ Safety Solutions

Spider's line of safety products and services is a natural extension of our access solutions.

Maximum Angle
180° (Straight)

Minimum Angle
120°

SC-40
2 Req



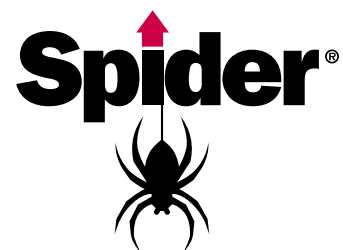
At Spider we are fully committed to meeting our customers' safety needs through the manufacture and distribution of fall protection products. We understand that our job is to help you do your job safely and efficiently. We're unique in the industry, since, every day, we use the products we offer to customers.

We know exactly how simple adjustments can make a world of difference in safety and comfort. Safety is part of our daily lives.

For more than fifty years, contractors have been depending on Spider to provide solutions that work—safely and profitably. You can see from our vast network of Spider

branches and product offerings, that we are providing these solutions in every major region in North America.

We set the standard for powered access equipment and fall arrest systems, and continue to raise our customers' expectations when it comes to products, service and commitment.



A Division of SafeWorks, LLC



Three key components comprise the Personal Fall Arrest System (PFAS). Individually, these components will not provide protection from a fall. Used properly in conjunction with each other, however, they form a PFAS, which becomes vitally important to safety on the jobsite.

Body Wear

The first component of a PFAS is the body wear worn by workers while performing the job. Simply put, the full-body harness is the only acceptable form of body wear for fall arrest. The body belt is no longer recommended; and, as of January 1, 1998, most regulations governing fall protection prohibit the use of body belts for fall protection due to the concentration of fall forces on the abdomen. Full-body harnesses distribute fall forces throughout the body, substantially reducing the chance of injury. In addition, the full-body harness keeps the worker suspended upright in the event of a fall and supported while awaiting rescue.

Harnesses should be selected based on the work to be performed and the work environment. Spider offers several webbing options and various configurations. All Spider harnesses meet applicable OSHA requirements and ANSI standards, and are rated at 310 lbs.

Spider harnesses are developed to insure maximum comfort and productivity for each user.

Connecting Devices

The second component of a personal fall arrest system is the connecting device. This may be a shock-absorbing lanyard, tie-back lanyard, retractable lifeline, rope grab and vertical lifeline, or similar device used to connect the body wear to the anchorage/anchorage connector. A connecting device should be selected based on the work to be performed and the work environment. In addition, it is critical to consider potential fall distance when determining the type of connecting device to be used.

Spider provides a wide range of innovative, user-friendly connecting devices for every application.

Anchorage/Anchorage Connectors

The third component of a personal fall arrest system is the anchorage/anchorage connector. An anchorage, commonly referred to as a tie-off point, may be an I-beam, column, rebar, scaffolding, or other structural member. An anchorage connector is used to join the connecting device to the anchorage when a direct connection does not exist. It is important to select the proper anchorage/anchorage connector for ultimate safety. Anchorages and anchorage connectors must be easily accessible, capable of supporting 5,000 lbs. of force per worker, and they must be located high enough for a worker to avoid contact with a lower level should a fall occur.

Spider offers a variety of convenient 5,000 lb. rated anchorage connectors for every application. All Spider anchorage connectors meet applicable OSHA requirements and ANSI standards for compliance and safety.

Spider facilities

Atlanta	Houston	Orlando	Washington/
Boston	Kansas City	Pensacola	Baltimore
Charlotte	Las Vegas	Philadelphia	Hong Kong, China
Chicago	Los Angeles	Portland	Kontich, Belgium
Cleveland	Miami	St Louis	
Dallas	Minneapolis	San Francisco	
Denver	New Orleans	Seattle	
Detroit	New York	Vancouver, BC	



365 Upland Drive
 Tukwila, Washington 98188
 p 1.877.774.3370
 (Routed to your nearest
 Spider Service Center)
 spiderstaging.com