

August 12, 2013

Spider Provides Suspended Scaffolding, Fall Protection & Training for Penterra Plaza, Denver

Seattle – Spider, a division of SafeWorks, LLC, provides a complete suspended access solution to general contractor Reconstruction Experts Inc. for inspection and repair work on the Penterra Plaza in Denver, CO.

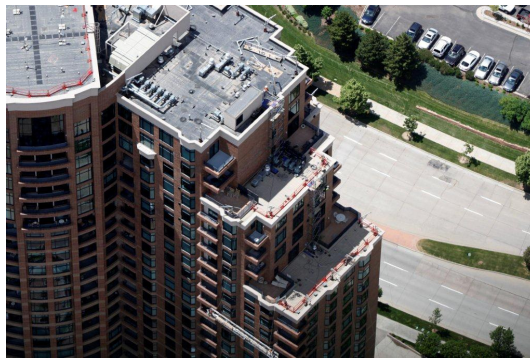
This 280-ft tall, multi-terraced commercial and residential building required inspection of every weep hole and brick tuck pointing location of the exterior façade, leak and pressure tests on every window fitting, and corrective glazing work on failed windows.

Over 750 linear feet of SpiderRail™, Spider's new temporary guardrail system, was used to provide OSHA-compliant fall protection along the edges of the building. Seven modular platforms ranging in length from 20-35 ft and powered by Zmac® hoists, twenty davits, and custom engineered davit adapters provided access for the contractors to complete their inspection and repair work to the windows & façade. Finally, a 170T hydraulic crane was used to load the equipment onto the building.

Spider was involved in all of the safety planning for this project and provided Competent Person Training for all of the mason workers, glaziers and general contractors utilizing the equipment.

“As a first time customer of Spider, I have nothing but positive things to say about the equipment and service they are providing for the Penterra Plaza project,” states Jake Marshall, Project Manager with Reconstruction Experts Inc. “Whenever we are faced with challenges, Spider's Denver team personally takes action and delivers a safe and timely solution. We are especially impressed with their plan to utilize a crane service to load the equipment onto the structure, since transporting it through the building would have been disruptive to the building's occupants. Not only did this improve our efficiency, it reassured the building owners that their concerns were our top priority.”

Spider was the only local swing stage company that could provide the high volume of rental equipment, custom fabrication and engineering, and extensive training required for Penterra Plaza. After more than 100 days into the project, there have been no incidents or injuries.



- Atlanta
- Boston
- Charlotte
- Chicago
- Cleveland
- Dallas
- Denver
- Detroit
- Houston
- Kansas City
- Las Vegas
- Minneapolis
- New Orleans
- New York
- Orlando
- Pensacola
- Philadelphia
- Portland
- St. Louis
- San Diego
- San Francisco
- Seattle
- Washington D.C.
- Antwerp
- Dubai
- Hong Kong
- Madrid
- Melbourne
- Mumbai
- Panama City
- Vancouver

Media Contact:

Heidi Krueger – Marketing Specialist

Heidi.Krueger@SafeWorks.com

About Spider:

Founded in 1947, Spider, a division of SafeWorks, created the powered suspended access business by introducing the well-known Spider basket. Since then, our product and service offering has expanded greatly to serve the needs of an ever-growing marketplace. Spider is the largest manufacturer and distributor of access and safety solutions in North America, serving more customers from more locations with a wider variety of products and services than any other company. From baskets, traction hoist and platform rental, to safety and training, to specialty-engineered products - Spider has a strong team of professionals, along with a national network of sales, service and support capabilities to provide you with the most reliable access solutions available.



Atlanta

Boston

Charlotte

Chicago

Cleveland

Dallas

Denver

Detroit

Houston

Kansas City

Las Vegas

Minneapolis

New Orleans

New York

Orlando

Pensacola

Philadelphia

Portland

St. Louis

San Diego

San Francisco

Seattle

Washington D.C.

Antwerp

Dubai

Hong Kong

Madrid

Melbourne

Mumbai

Panama City

Vancouver

Spider, a division of SafeWorks

365 Upland Drive, Seattle, WA 98188

Telephone: 877-774-3370 - Fax: 206-575-6240 - Email: spider@spiderstaging.com