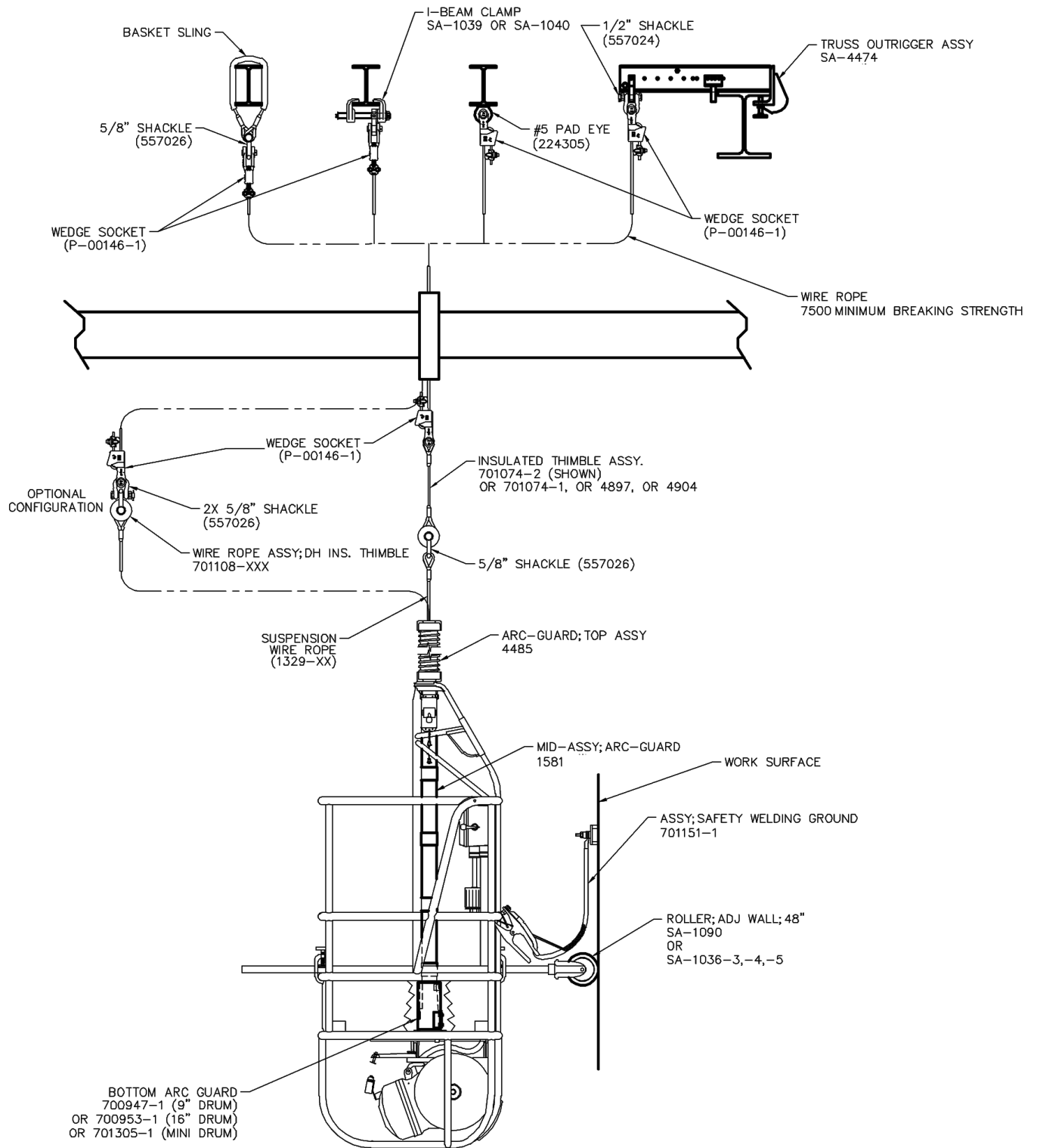
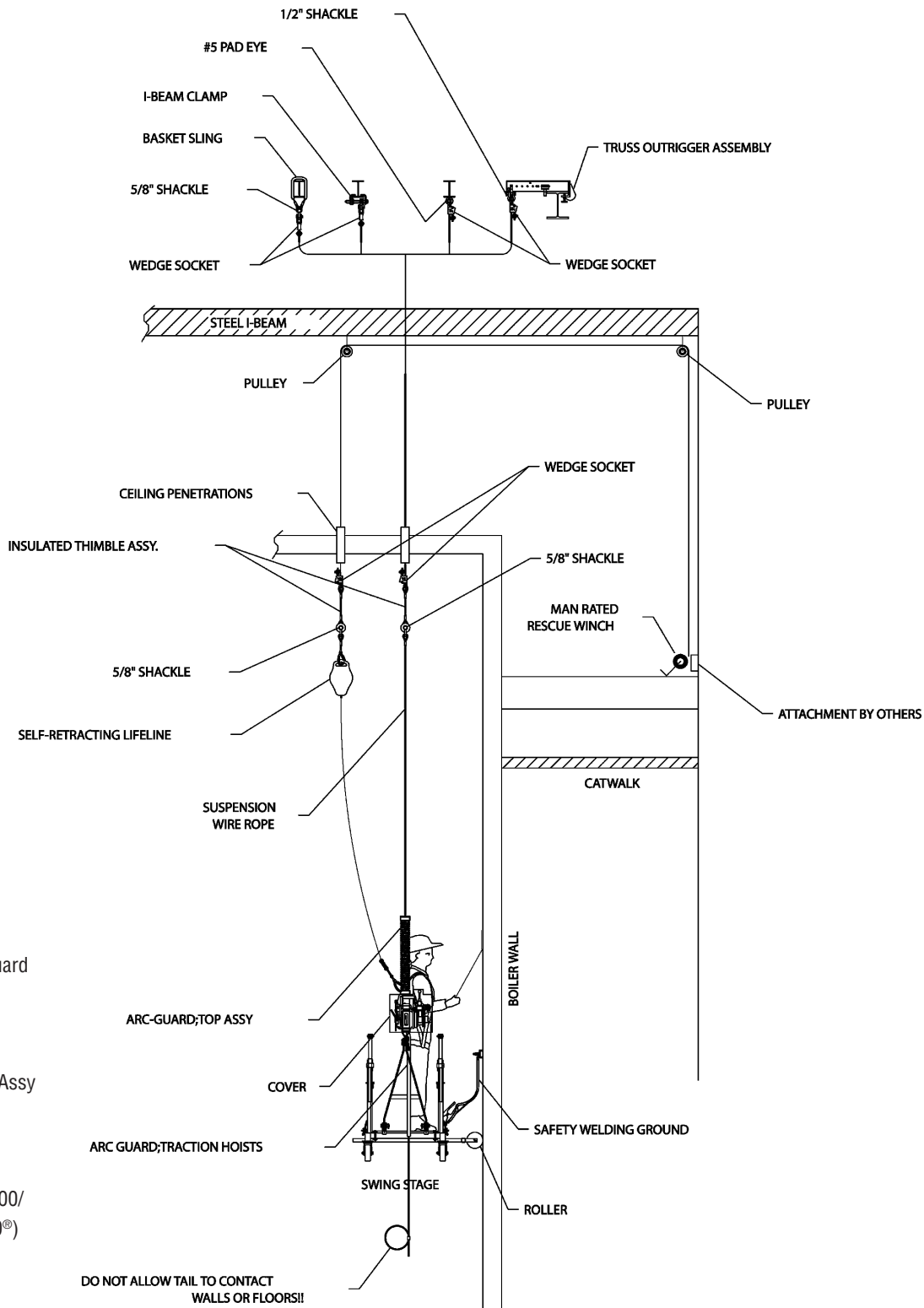


Welding Installation Details: Drum Hoist



Installations to make suspended scaffold comply with OSHA Standard 29 CFR 1926.451 (f) (17).

Welding Installation Details: Traction Hoists



Traction Hoist Arc Guard Components:

Above the hoist:
4485 Arc Guard Top Assy

Below the Hoist:
701301-2 Arc Guard
Traction Hoist (SC1000/
1500 and Zmac/1000®)
701301-1 Arc Guard
Traction Hoist
(SC30/40/99115/99135)

Alternate: 1581 can be used below the hoist

For a complete list of welding accessories, see page 135.