

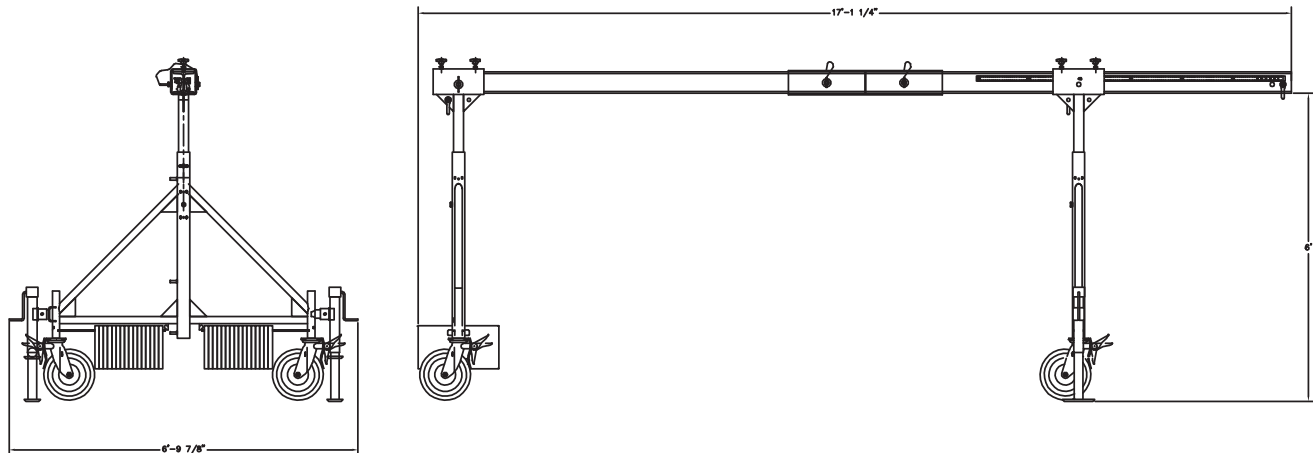
# Rolling & Fixed Outrigger Gantry Stands (701960-1 & 701960-2)



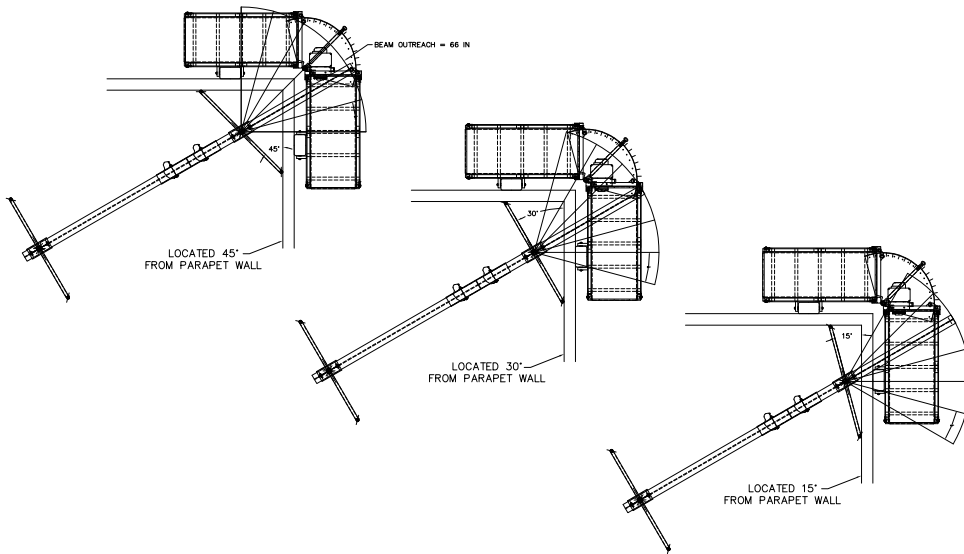
<b>Specifications: 701960-1</b>	
<b>Load/Capacity:</b>	8,400 lb. (3,810.2 kg) fulcrum load
<b>Weight:</b>	65 lbs. (29.5 kg) heaviest single piece
<b>Outreach:</b>	750 lbs. (340.2 kg) @ 74 in. (1,880 mm) reach 1,000 lbs. (453.6 kg) @ 66 in. (1,676 mm) reach 1,250 lbs. (567 kg) @ 54 in. (1,372 mm) reach 1,500 lbs. (680.4 kg) @ 48 in. (1,219 mm) reach
<b>Dimensions:</b>	6 ft (1.8 m) wide 4 ft (1.2 m) minimum height 6 ft (1.8 m) maximum height under the beam

## Key Features:

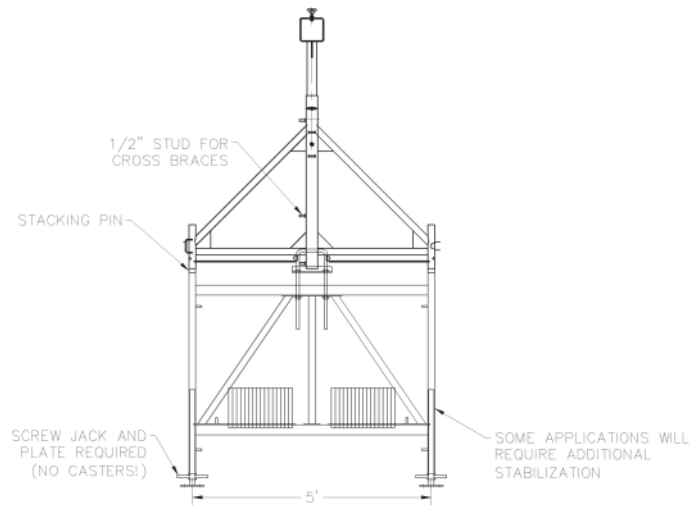
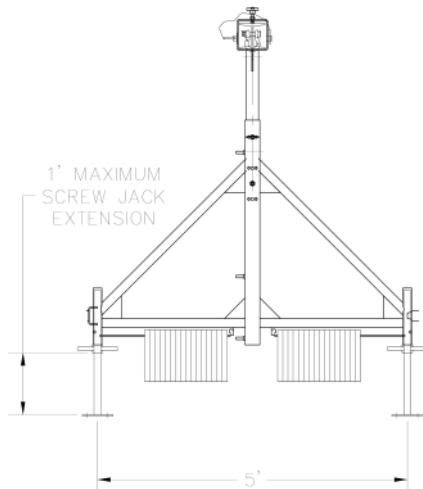
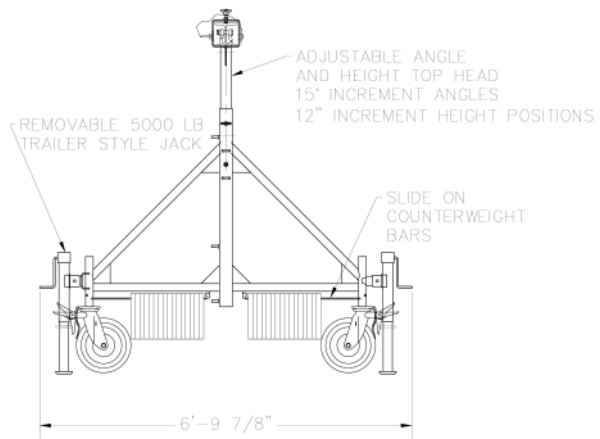
- Clears 6 ft (1.8 m) walls
- Available as a rolling outrigger system (701960-1) with casters and jacks or as a simple frame with screw jacks and base plates (701960-2)
- Accepts 8 in. (203 mm) 750 lb. (340.2 kg) capacity (A-11394) or 12 in. (305 mm) 1,200 lb. (544.3 kg) casters (A-11835)
- Compatible with all Spider 5 x 5 beam assemblies (8-0217-XX)
- Maximum reach is 66 in. (1,676 mm) with a 1,000 lb. (453.6 kg) hoist - no truss system required
- Uses counterweight quantities as listed on beam label - no counterweight formula required
- Support head telescopes vertically in 12 in. (305 mm) increments to clear varying parapet heights and allow multiple rigs to be stacked into corners
- Head angle adjustable in 15° increments from 0° to 45° to reduce beam reach in corners
- Combination of clearance and rotating heads permits travel around most roof mounted building components (HVAC units, antennas, transmitters, etc.)
- Increased beam height using Outrigger Beam Support frames (A-11393) or scaffold frames and cross brace
- Space for up to 3,200 lbs. (1,451.5 kg) of counterweights on frame
- Shackle anchorage point for tieback cables, connection to roof top structural members or counterweights placed on the roof surface
- Maximum of 1,000 lbs. (453.6 kg) of counterweight permitted when rolling to next drop
- Built by Spider in the USA



Refer to outrigger counterweight and fulcrum point load charts for leg loads. The fulcrum and counterweight loads are split evenly between each leg.



**Accessories:**  
Casters: A-11394 8 in. (203 mm) or  
A-11835 12 in. (305 mm)



More information online at  
[www.spiderstaging.com](http://www.spiderstaging.com)

Outrigger stands combine with scaffold tower to clear higher parapet.

For more information, call: 1-877-774-3370