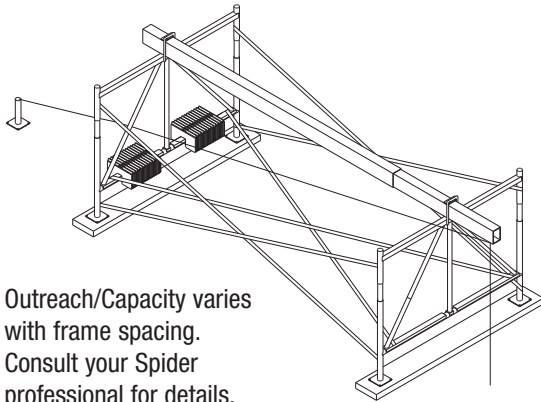


Outrigger Beam Support Frame

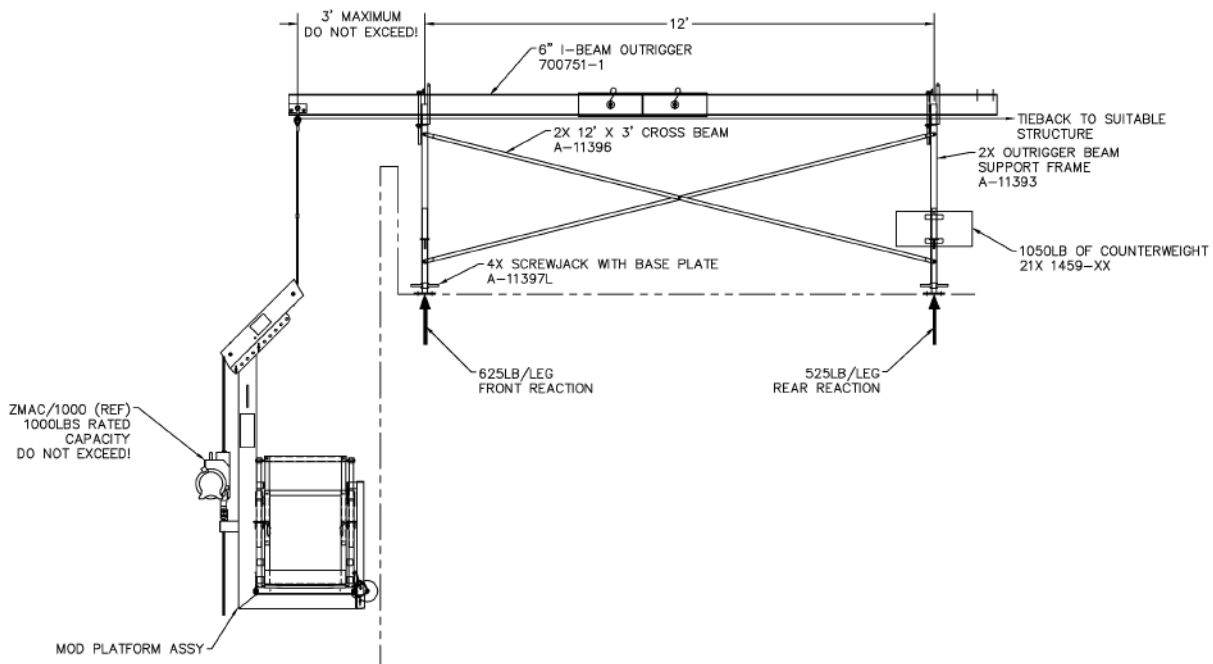


Outreach/Capacity varies with frame spacing. Consult your Spider professional for details.

Heavy duty steel frames stack in 4 ft 2 in. (1.3 m) increments for high parapet wall clearance with 700751-1, 8-0217 series, 700809-1 and 700819-1 beams.

Key Features:

- Frame configurations available with base plates or casters
- Loading available for 1,000, 1,250 and 1,500 lb. (453.6, 567 and 680.4 kg) capacities depending on frame spacing and beam length
- Can be stacked multiple tiers high with scaffold design when completed by qualified person
- Extensive assembly instructions cover frame sizing, beam outreach (cantilever), suspended load available and allowable leg loads – makes set-up goof-proof



Specifications: Part Numbers at Right	
Load/Capacity:	1,000-1,500 lbs. (453.6-680.4 kg)
Load/Capacity of Casters:	A-11394: 750 lbs. (340.2 kg) max A-11835: 1,200 lbs. (544.3 kg) max
Weight:	75 lbs. (34 kg)
Outreach:	Dependant on which beam is used
Construction:	Steel

Part Number	Description	How Used	Weight
A-11393	Frame	2 per tower	75 lbs. (34 kg)
A-11395	Cross Brace 12 x 4	1 per tower	20 lbs. (9.1 kg)
A-11396	Cross Brace 12 x 3	2 per tower	18 lbs. (8.2 kg)
A-11397	Screwjack base w/ base plate	For stacking frames 2 tall	10 lbs. (4.5 kg)
A-11394	Caster	For rolling towers	16 lbs. (7.3 kg)
A-11398	Coupling Pin	For stacking frames 2 tall	1 lb. (0.5 kg)
A-11835	12 in. (305 mm) Caster	For rolling towers	24 lbs. (10.9 kg)
P-00248	Assembly instructions - for base plate and screwjack applications		
P-00249	Assembly instructions - for caster applications		