

NOTES:

- 101. USE OF SUSPENDED SCAFFOLDING MUST COMPLY WITH OSHA 29 CFR 1926.451(f) AND ANY APPLICABLE LOCAL REGULATIONS.
- 102. ALL PERSONNEL ON SUSPENDED SCAFFOLDING MUST HAVE AN INDEPENDENT FALL ARREST SYSTEM THAT COMPLIES WITH OSHA 29 CFR 1926.451(g) AND ANY APPLICABLE LOCAL REGULATIONS.
- 103. LOAD ON SUSPENDED SCAFFOLDING PLATFORM MUST BE UNIFORMLY DISTRIBUTED. PLATFORM MUST REMAIN LEVEL. HOISTS MUST BE OPERATED SIMULTANEOUSLY.

104. SUSPENDED SCAFFOLD RIGGING AND TIEBACKS MUST COMPLY WITH OSHA 29 CFR 1926.451(a) AND 1926.451(d) AND ANY APPLICABLE LOCAL REGULATIONS.

105. USER SHALL FOLLOW DIRECTIONS FOR ASSEMBLY AND USE AS SHOWN ON LABEL P/N 702279

106. SEE TABLE FOR AMOUNT OF COUNTERWEIGHT REQ'D AND RESULTANT FRONT LEG LOADS.

107. SUPPORTING STRUCTURE MUST HOLD LOADS SHOWN WITHOUT FAILURE. LOADS SHOWN WERE CALCULATED AT 4 TIMES HOIST RATED CAPACITY.

108. FOR REACHES NOT LISTED THE AMOUNT OF COUNTERWEIGHT CAN BE CALCULATED USING THE EQUATION $C=(4xLxR)/B$ THE VERTICAL REACTION AT THE FULCRUM CAN BE CALCULATED BY USING THE EQUATION $F=(4xL+C)/2$

109. REFER TO OUTRIGGER BEAM SUPPORT FRAME ASSEMBLY INSTRUCTION MANUALS FOR DETAILS ON ASSEMBLY, USE AND LOAD CAPACITY. REFER TO MANUAL SW-540R/C-1 (P/N P-00249) FOR FRAMES EQUIPPED WITH CASTERS. REFER TO MANUAL SW-540R/BP-1 (P/N P-00248) FOR FRAMES EQUIPPED WITH BASE PLATES AND OR SCREWJACKS.

110. SEE DRAWINGS GA1001, GA1002 & GA1003 FOR DETAILS OF TYPICAL PLATFORM ASSEMBLES

111. TYPICAL TIEBACK DETAILS ON GA1014, GA1015 & GA1016

		"R" REACH (INCHES)										OUTRIGGER LENGTH (FEET) (R+B)
		66"	60"	54"	48"	42"	36"	30"	24"	18"		
RATED LOAD OF HOIST "L"	1000	44 28 25	38 25 22	33 21 19	28 19 17	24 16 14	20 13 12	16 11 10	12 9 8	9 6 6	16' 22' 25'	
	1250	UN-SAFE	UN-SAFE	41 27 24	35 23 21	29 20 18	24 17 15	20 14 12	15 11 10	11 8 7	16' 22' 25'	
	1500	UN-SAFE	UN-SAFE	UN-SAFE	42 28 25	35 24 21	29 20 18	23 16 15	18 13 12	13 9 9	16' 22' 25'	
		NO. OF 50 LB COUNTERWEIGHTS "N"										

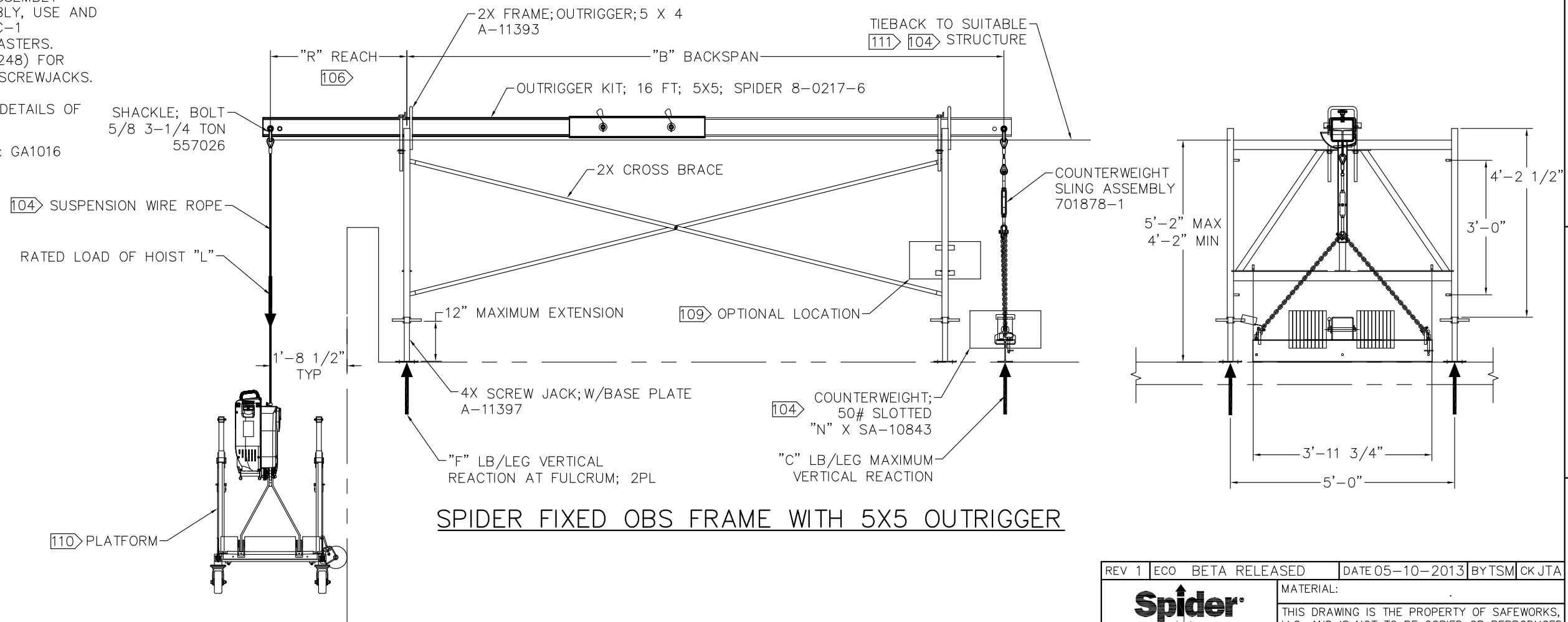
COUNTERWEIGHT TABLE

		"R" REACH (INCHES)										OUTRIGGER LENGTH (FEET) (R+B)
		66"	60"	54"	48"	42"	36"	30"	24"	18"		
RATED LOAD OF HOIST "L"	1000	3100 2700 2625	2950 2550 2550	2825 2525 2475	2700 2475 2425	2600 2400 2350	2500 2325 2300	2400 2275 2250	2300 2225 2200	2225 2150 2150	16' 22' 25'	
	1250	UN-SAFE	UN-SAFE	3525 3175 3100	3375 3075 3025	3225 3000 2950	3100 2925 2875	3000 2850 2800	2875 2775 2775	2775 2700 2675	16' 22' 25'	
	1500	UN-SAFE	UN-SAFE	UN-SAFE	4050 3700 2625	3875 3600 3525	3725 3500 3450	3575 3400 3375	3450 3325 3300	3325 3225 3225	16' 22' 25'	

VERTICAL REACTION AT FULCRUM "F" (LB/LEG)

		"R" REACH (INCHES)										OUTRIGGER LENGTH (FEET) (R+B)
		66"	60"	54"	48"	42"	36"	30"	24"	18"		
RATED LOAD OF HOIST "L"	1000	2200 1400 1250	1900 1250 1100	1650 1050 950	1400 950 850	1200 800 700	1000 650 600	800 550 500	600 450 400	450 300 300	16' 22' 25'	
	1250	UN-SAFE	UN-SAFE	2050 1350 1200	1750 1150 1050	1450 1000 900	1200 850 750	1000 700 600	750 550 500	550 400 350	16' 22' 25'	
	1500	UN-SAFE	UN-SAFE	UN-SAFE	2100 1400 1250	1750 1200 1050	1450 1000 900	1150 800 750	900 650 600	650 450 450	16' 22' 25'	

VERTICAL REACTION AT COUNTERWEIGHT "C" (LB)



SPIDER FIXED OBS FRAME WITH 5X5 OUTRIGGER

REV 1	ECO	BETA RELEASED	DATE 05-10-2013	BY TSM	CK JTA
			MATERIAL:		
A Division of SafeWorks, LLC 365 UPLAND DRIVE SEATTLE, WASHINGTON 98188			THIS DRAWING IS THE PROPERTY OF SAFEWORKS, LLC. AND IS NOT TO BE COPIED OR REPRODUCED WITHOUT THE WRITTEN CONSENT OF SAFEWORKS, LLC.		
DRAWN BY TSM		DATE 3-21-2013		TITLE	
ENG JTA		SCALE D 3/4":1'-0"		DRAWING NUMBER	
				5X5 OUTRIGGER FIXED OBS FRAMES	
				GA1010	
				1 OF 1	